



FORD & PARTNERS

— ESTATE AGENTS —



11 The Phillimores London Road, High Wycombe, Buckinghamshire, HP11 1HD



11 The Phillimores London Road, High Wycombe, Buckinghamshire,
HP11 1HD

Offers over £250,000

A superb two double bedroom, two bathroom apartment situated in a small modern development on Hammersley Lane. This luxury apartment is being sold with the added benefit of no onward chain.

Description

Situated on the top floor, this spacious, bright and airy apartment is located within the popular Phillimores Development. Originally constructed in 2008, by SJ Homes, the apartments were constructed to a high specification with Oak Flooring, Oak Internal Doors and Kitchens by Symphony. Since constructed, the current owners have updated both the ensuite and family bathroom.

The accommodation comprises of two double bedrooms, a family bathroom, an ensuite from the principal bedroom and an open plan kitchen, diner and sitting room. Also benefitting from far reaching views across the valley from the two balconies.

Further features include electric heating, UPVC double glazing, fitted storage and allocated parking with visitor bays.

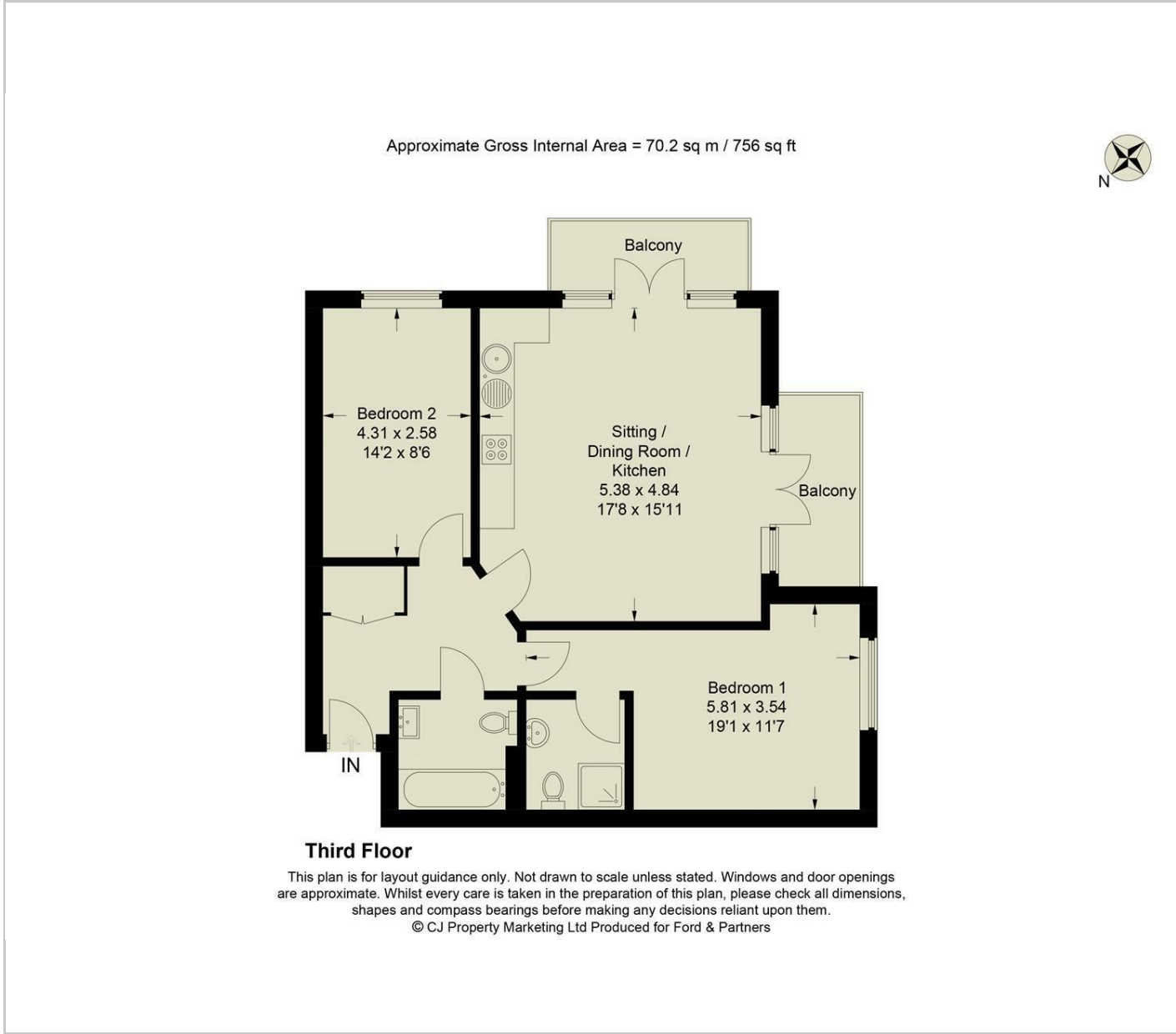


Situation

The Phillimores is located on the London Road and accessed via Hammersley Lane, East of High Wycombe's Town Centre. The Retail Park is a short walk away where you have a large M&S Food Hall, Pizza Hut, Wickes and other shops and amenities close by. Wycombe is a combination of industrial and market town, with a rich history and traditional emphasis on furniture production. Wycombe benefits from two motorway junctions of the M40 and the reliable Chiltern Railway service where you can be in London Marylebone Station in 27 minutes. Just a short stroll away is Kingsmead Park which is the home of the South Buckinghamshire Netball Association and the High Wycombe Rugby Club.



Floor Plans



Area Map



Energy Performance Graph

