



FORD & PARTNERS

— ESTATE AGENTS —

15 Millers Crescent, Ryemead Boulevard, High Wycombe, Buckinghamshire, HP11 1GH



15 Millers Crescent, Ryemead Boulevard, High Wycombe, Buckinghamshire,
HP11 1GH

A modern two bedroom, two bathroom apartment in Ryemead Boulevard benefiting from two balconies and secure gated entry parking. The property offers light and airy rooms with a lovely contemporary interior.

Guide price £250,000

Description

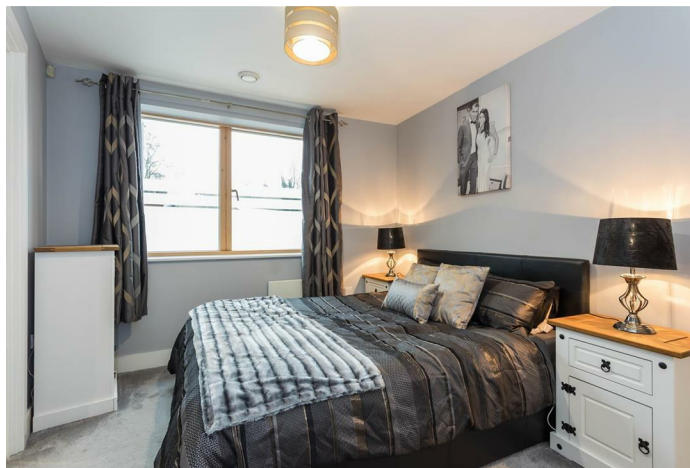
A modern apartment boasting two double bedrooms, two bathrooms (family bathroom & en-suite), a spacious open plan kitchen/diner/living area and a south balconies with one leading out onto the communal grounds. The property has recently had new carpets and flooring throughout.

Situation

Ryemead Boulevard is conveniently located next to a vast array of shopping facilities. These include a large Marks & Spencer Food Hall, Furniture Village, Currys & PC World, Pizza Hut and many more. From the property, the train station is just a short drive (1.7miles) and M40 Junction 3 is only 1.8 miles away.

The High Wycombe town centre provides an extensive range of shopping facilities and a vast array of cafes, restaurants and bars along with the excellent Wycombe swan theatre. A weekly market is held in the High street. High Wycombe is renowned for its leisure and recreational amenities and is home to Wycombe Wanderers Football Club. The town has a new sports centre and two multi-screen cinema complexes. A Newly built Waitrose supermarket. Further amenities include a John Lewis department store, Costa Coffee store and Next clothes and home store.

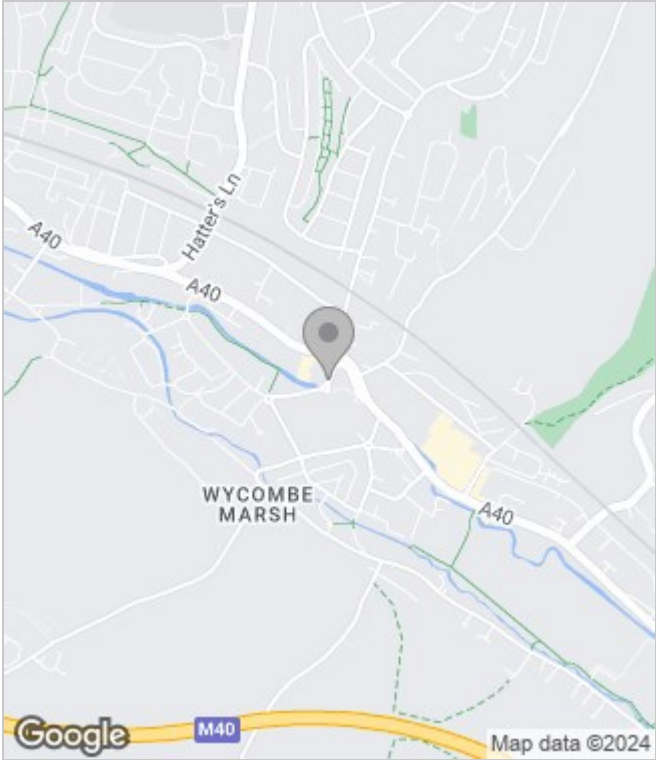
For the commuter there is a frequent rail service from High Wycombe to London Marylebone in under 30 minutes and the area also benefits from being close to the M40, providing links to the national motorway network including the M25 and easy access to Heathrow Airport.



Floor Plans



Area Map



Energy Performance Graph

