



FORD & PARTNERS

— ESTATE AGENTS —



250 Hughenden Road, High Wycombe, Buckinghamshire, HP13 5PE



250 Hughenden Road, High Wycombe, Buckinghamshire, HP13 5PE

Guide price £495,000

A charming three double bedroom, newly renovated semi-detached home, occupying a delightful position just a stone's throw from Hughenden Park – 25 hectares of National Trust land.

Description

When entering the property through the front door, you are welcomed into the central hallway with the carpeted stairs and cloakroom in front. Through the door to the left, you have the statement sitting room which benefits from an open fireplace, high ceilings, a bay window and original wooden flooring. Back through the hallway, you enter into the spacious dining room which leads to the kitchen and utility room. The bespoke modern kitchen is a beautiful feature of this fine property and has been extended to the rear to offer a spacious utility room with additional storage space.

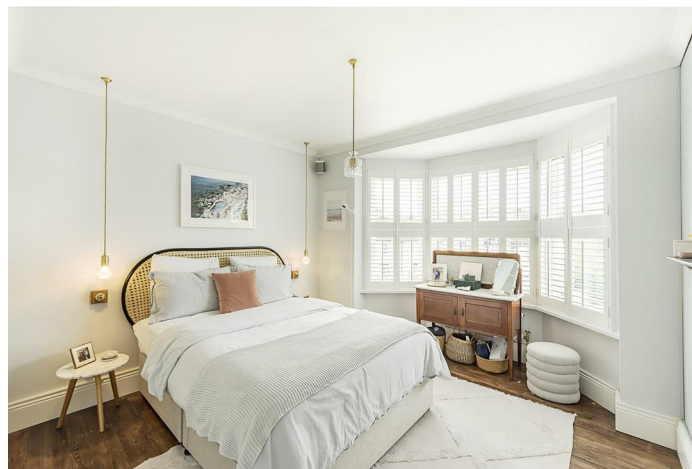
On the first floor, there are three double bedrooms and the family bathroom. The family bathroom has been renovated within keeping of the era of this property and benefits from a roll top bath, period style basin and toilet.

Outside the property, you have an 80 ft rear garden which is mainly laid to lawn with an area for entertaining. The property also benefits from driveway parking for two cars.



Situation

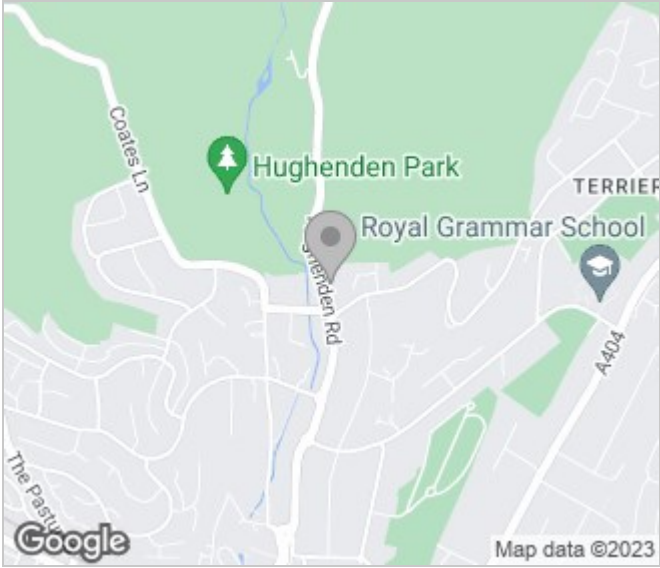
Hughenden Road is situated on the north-side of High Wycombe's Town Centre, just 1 mile to the Mainline Train Station & Town Centre. Via the Chiltern Railway Service, you'll be at London Marylebone Station in just 27 minutes or Oxford in 38 minutes. South Buckinghamshire is renowned for excellent state and independent schools, and High Wycombe has some of the best. All walkable from the property and in high demand, there's Wycombe Abbey, the Royal Grammar School, Wycombe High School, Godstowe and John Hampden.



Floor Plans



Area Map



Energy Performance Graph

