



FORD & PARTNERS
— ESTATE AGENTS —

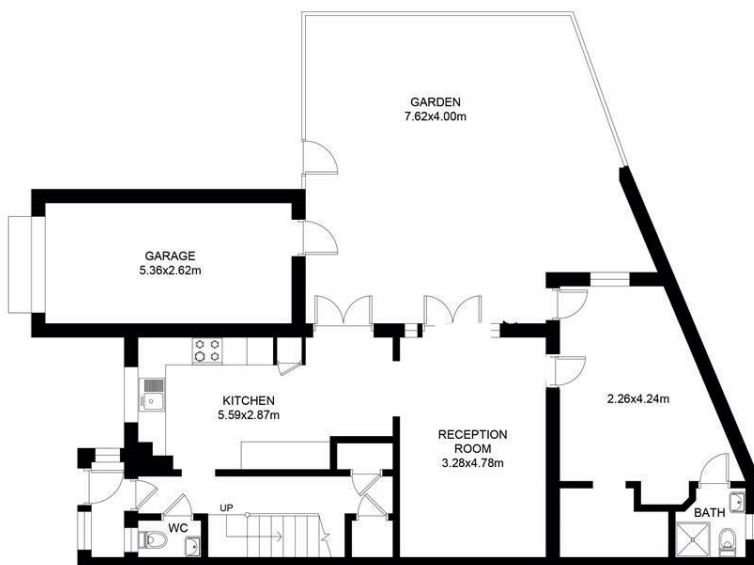


28 Redman Road, High Wycombe, Buckinghamshire, HP12 4PH

A spacious four bedroom semi-detached home situated close to popular schooling and J4 M40.

- **Four Bedroom House**
- **Two Bathrooms**
- **Gas Central Heating**
- **Double Glazing**
- **Decked/Patio Garden**
- **Driveway for 2 Cars**
- **Garage Room**
- **Refitted Kitchen**
- **Refitted Bathroom**
- **Sharers Welcome**

£1,950 Per month



This floor plan including furniture, fixture measurements and dimensions are approximate and for illustrative purposes only. BoxBrownie.com gives no guarantee, warranty or representation as to the accuracy and layout. All enquiries must be directed to the agent, vendor or party representing this floor plan.

Redman Road

Energy Efficiency Rating		
	Current	Potential
Very energy efficient - lower running costs		
(92 plus) A		
(81-91) B		
(69-80) C		
(55-68) D		
(39-54) E		
(21-38) F		
(1-20) G		
Not energy efficient - higher running costs		
England & Wales	EU Directive 2002/91/EC	82

Environmental Impact (CO ₂) Rating		
	Current	Potential
Very environmentally friendly - lower CO ₂ emissions		
(92 plus) A		
(81-91) B		
(69-80) C		
(55-68) D		
(39-54) E		
(21-38) F		
(1-20) G		
Not environmentally friendly - higher CO ₂ emissions		
England & Wales	EU Directive 2002/91/EC	

