



**FORD & PARTNERS**

— ESTATE AGENTS —



1 Brunner Place Queens Road, High Wycombe, Buckinghamshire, HP13 6AP





1 Brunner Place Queens Road, High Wycombe, Buckinghamshire, HP13 6AP

**Offers over £270,000**

A recently redecorated two double bedroom, two bathroom ground floor apartment benefitting from gas central heating and direct access to the communal gardens.



## Description

Situated within a short walking distance of the train station (0.5 miles) this two bed, two bathroom ground floor apartment is an ideal first time purchase or investment. This spacious apartment features a separate kitchen, Juliette balcony and en suite off the master bedroom and a patio area off the living room. The property further benefits from gas central heating, a generous lease and allocated parking.

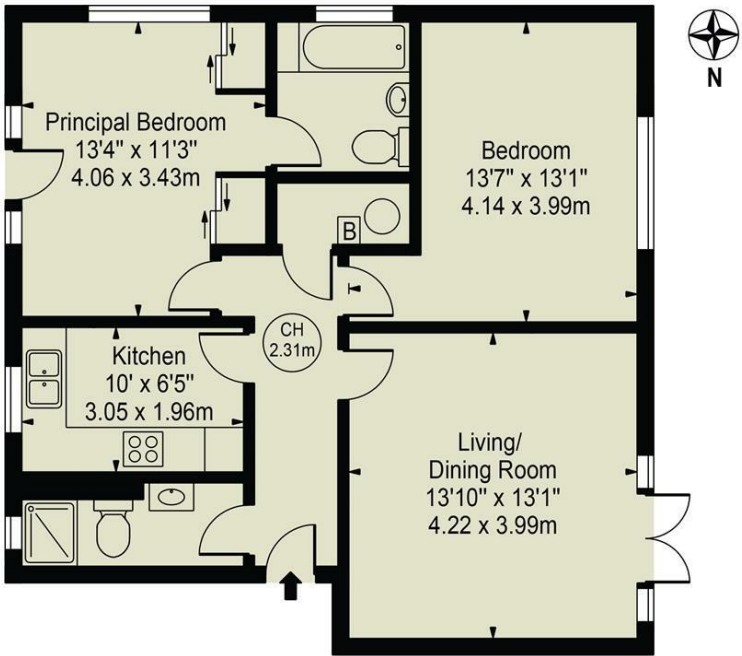
## Situation

Queens Road is in a very popular and well regarded location due to only being a stone's throw from the mainline station (0.2 miles), Eden Shopping Centre (1 mile), town Centre and Rye Park (0.1 mile).



Floor Plans

Brunner Place  
Approx. Gross Internal Area 722 Sq Ft - 67.08 Sq M



Lower Ground Floor

For Illustration Purposes Only - Not To Scale

This floor plan should be used as a general outline for guidance only and does not constitute in whole or in part an offer or contract. Any intending purchaser or lessee should satisfy themselves by inspection, searches, enquiries and full survey as to the correctness of each statement. Any areas, measurements or distances quoted are approximate and should not be used to value a property or be the basis of any sale or let. Copyright Morriarti Photography & Design LTD

Area Map



Energy Performance Graph

