




FORD & PARTNERS
— ESTATE AGENTS —


FORD & PARTNERS
— ESTATE AGENTS —
TO LET
01494 840 600
www.fordandpartners.com

Cressex Road High Wycombe Buckinghamshire HP12 4TY



Cressex Road High Wycombe HP12 4TY

£2,750 Per month

Five Bedroom Semi-Detached House to Rent

Description

This well-presented family home is set back from the main road and has a large private driveway. The size of the home is impressive at over 200m² with the reception room boasting 50m² of flexible living space alone. There is an additional reception on the ground floor, large kitchen with an island, as well as a bathroom and bedroom. The garage can be accessed from the kitchen for additional storage. The neatly paved driveway is surrounded by colourful flower beds and can accommodate multiple cars. There is a generous quiet and low-maintenance garden to the rear. Upstairs, the accommodation boasts three large double bedrooms and a further bedroom. The master bedroom has an ensuite with a separate bath and shower. There is also an additional family bathroom and a separate w/c.

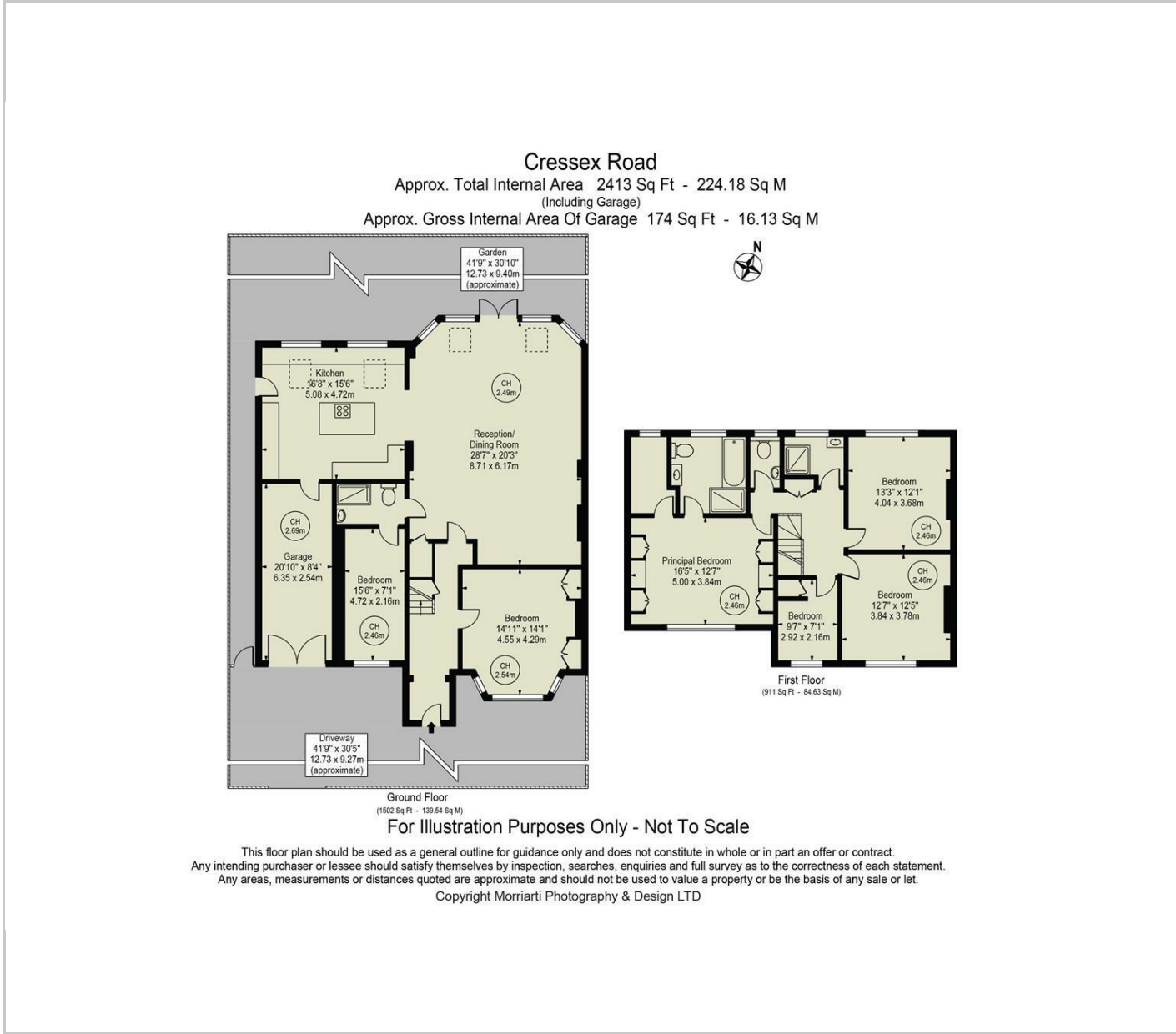
Situation

The home is located towards the start of Cressex Road, under 0.3 miles to Handy Cross M40 and A404 junction. The area is sought after for its host of excellent schools; John Hampden Grammar School, Wycombe High Grammar School and Cressex Community School are all within a short walk. The popular Chepping View Primary Academy, rated Outstanding by Ofsted, is also under 5min walk away.

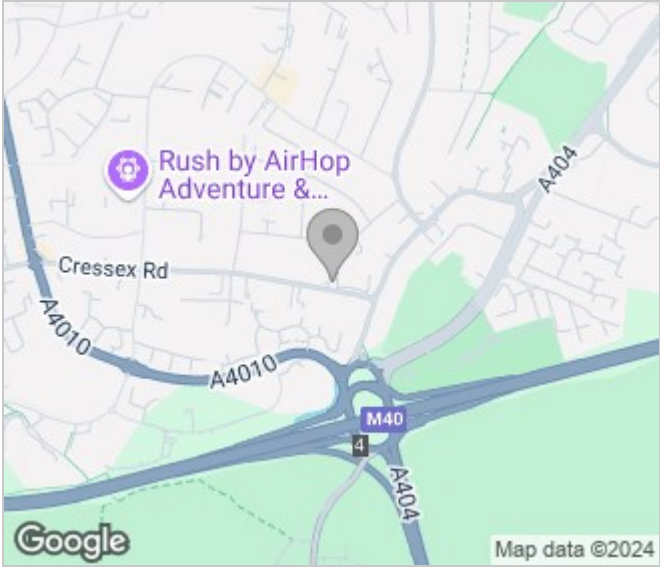
There are a number of retail and leisure facilities around Handy Cross, a 10min walk away, including a modern leisure centre, a free park and ride to the train station (for season ticket holders) and a Waitrose. There are also a host of local businesses situated in Cressex Business Park.



Floor Plans



Area Map



Energy Performance Graph

