



FORD & PARTNERS

— ESTATE AGENTS —



Freer Crescent High Wycombe HP13 7YG



Freer Crescent High Wycombe HP13 7YG

£210,000

Spacious 1 bedroom maisonette available with the added benefit of an extended lease.

Description

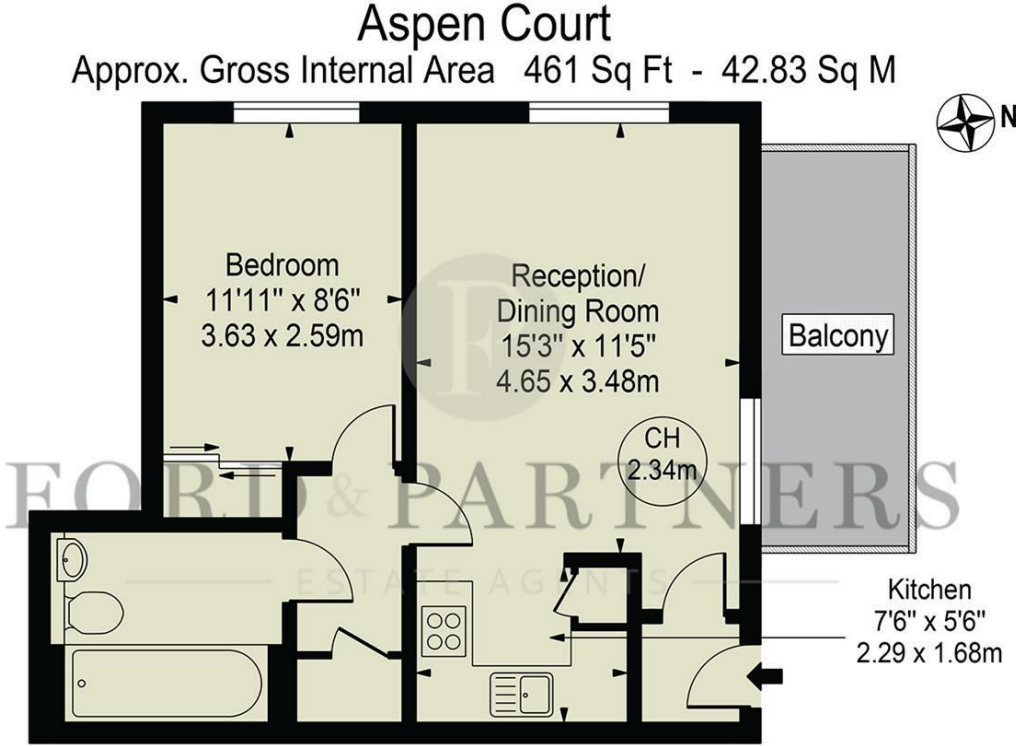
A modern 1-bedroom ground floor apartment. Upon entering the property through your own private entrance, the open plan kitchen/living area benefits from access onto a well-proportioned patio. Through the hallway, there is access into the double bedroom that comes with a fitted wardrobe and a spacious family bathroom. Further features include double glazing, allocated parking, Residents bike storage and an extended lease with reduced ground rent.

Situation

Aspen Court is conveniently found on the popular East Side of High Wycombe. Located just over a mile away from junction 3 of the M40 and 2 miles from the High Wycombe Train Station, which offers regular services to London Marylebone(27 minutes) and Oxford(40 Minutes). Within a short walk of Kingsmead Park there is plenty of greenery to enjoy also.



Floor Plans

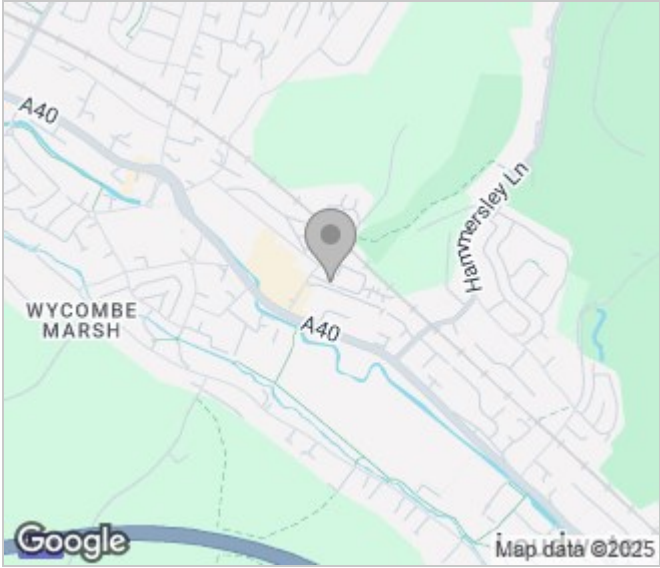


Ground Floor
For Illustration Purposes Only - Not To Scale

This floor plan should be used as a general outline for guidance only and does not constitute in whole or in part an offer or contract. Any intending purchaser or lessee should satisfy themselves by inspection, searches, enquiries and full survey as to the correctness of each statement. Any areas, measurements or distances quoted are approximate and should not be used to value a property or be the basis of any sale or let.

Copyright Morriarti Photography & Design LTD

Area Map



Energy Performance Graph

