



**FORD & PARTNERS**

— ESTATE AGENTS —

Gillfield Close High Wycombe Buckinghamshire HP11 1TS





Gillfield Close High Wycombe HP11 1TS

**£400,000**

A recently refurbished 2 Double bedroom house situated on a quiet Cul-De-Sac in Cressex. This property has the added benefit of being sold with No Onward Chain.

## Description

When entering the property through the front door, you are welcomed into the central hall with the stairs to your left and reception room in front. The kitchen although separate to the reception room, feels open plan with the stylishly herringbone flooring running throughout the ground floor. The large French doors lead out onto a private garden with a spacious newly constructed decked area to enjoy for entertaining. The kitchen boasts an integrated fridge freezer, oven, gas hob, extractor fan, dishwasher and washing machine.

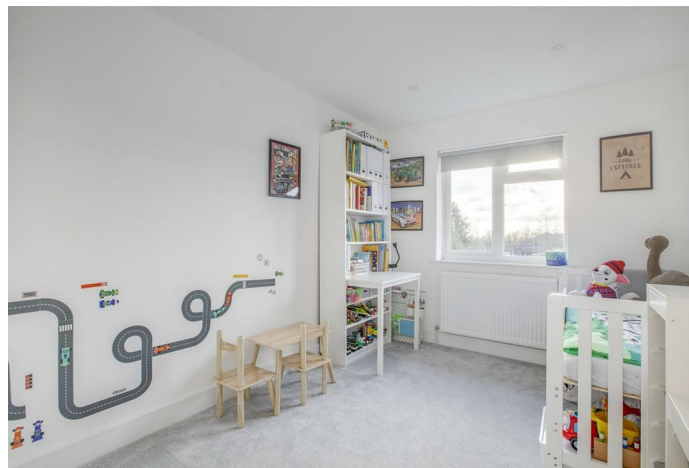
On the first floor, there are two double bedrooms and the family bathroom. The newly laid carpet covers the stairs, landing and both bedrooms.

Further new features include a new consumer unit, a brand-new hot water cylinder along with new radiators throughout, new LED spotlights throughout and new internal doors. The property also benefits from an allocated parking space, garage and a newly block paved front drive with comfortable space for 2 vehicles.

This high-quality home is sold with the added benefit of having no onward chain.

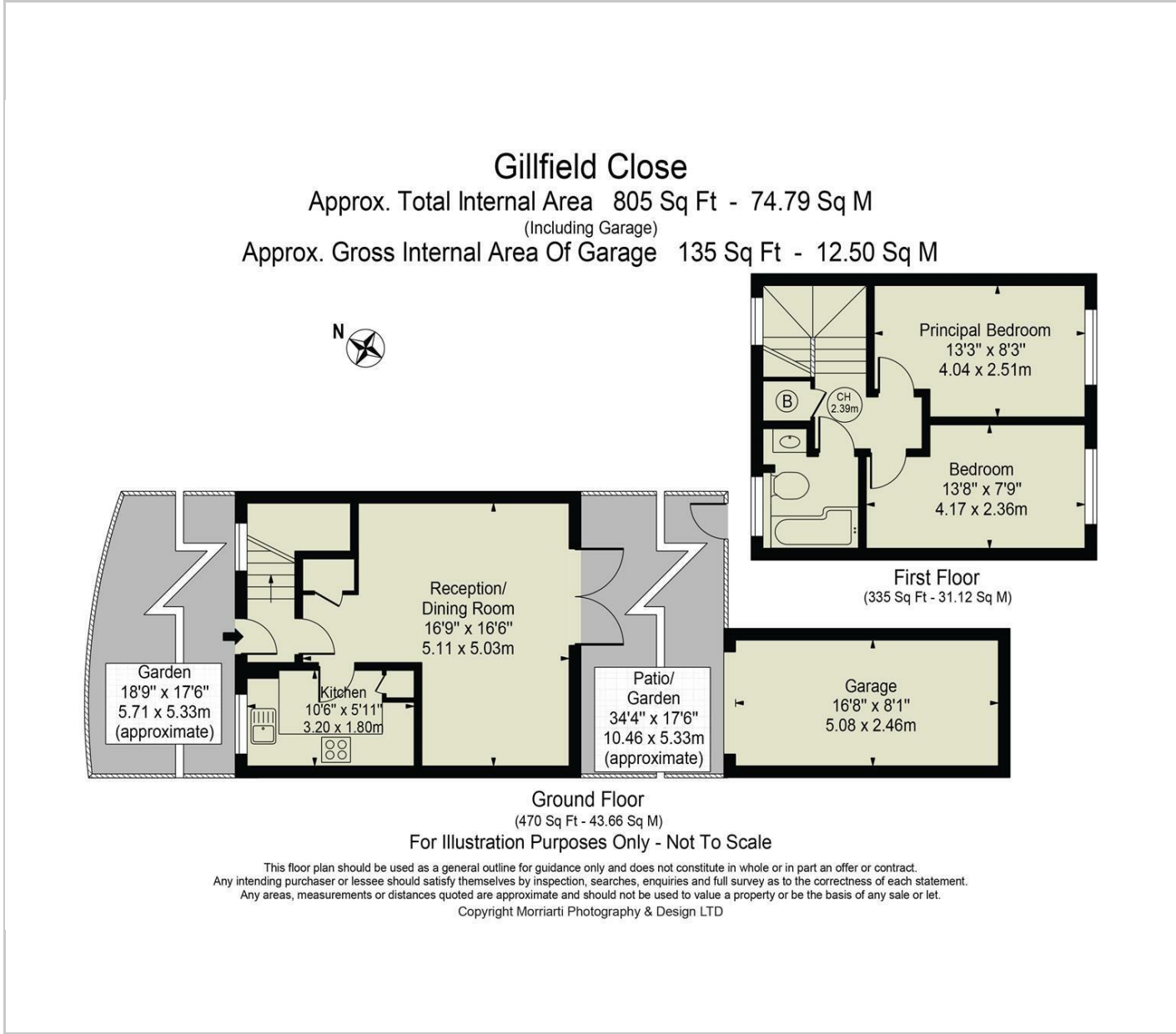
## Situation

Gillfield Close is conveniently located within 0.1 miles of J4 of the M40 and A404. There is also a large Waitrose Supermarket, John Lewis, ASDA, TGI Friday's, Costa Coffee, Next, Omniplex Cinema and The Leisure Centre all within walking distance. Also within easy reach is Chepping View Primary School, John Hampden Grammar School, Cressex School and Wycombe High Grammar School.

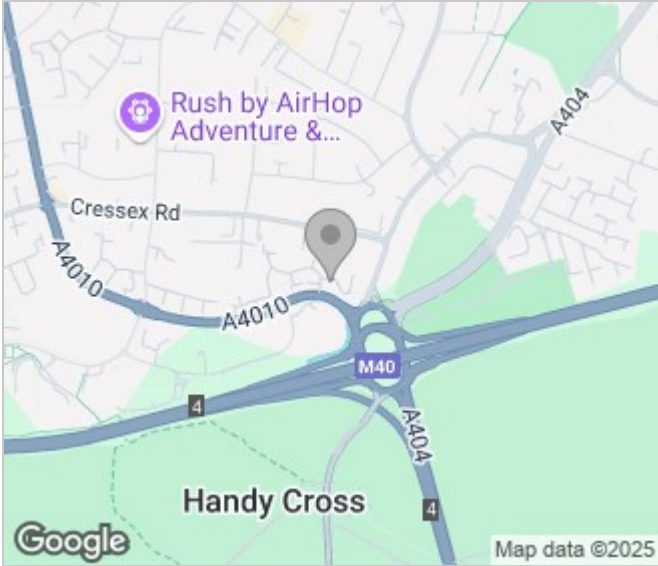




Floor Plans



Area Map



Energy Performance Graph

