



SHEEPCOTE DELL ROAD

Holmer Green, High Wycombe HP15 6TL



BARTRAMS

# HOLMER RIDINGS

61 Sheepcote Dell Road, Holmer Green, High Wycombe  
HPI5 6TL

## Description

Holmer Ridings is a charming Grade II listed property constructed around 1728, featuring attractive brick and flint exteriors. Extensively extended and updated over the years, it offers a wonderful family home that blends original character with contemporary style. Noteworthy rooms include the Mark Wilkinson fitted kitchen/breakfast room which is open-plan with a rounded bay orangery and the elegant drawing room highlighted by three tall arched windows. The spacious lower ground principal bedroom suite, boasts a luxurious bathroom and 'his and hers' dressing rooms. This delightful home is set along a long tree-lined driveway accessed via a gated entrance and is surrounded by formal gardens that includes a stunning sunken terrace ideal for al fresco entertaining, all situated within approximately 4.6 acres.

## Additional accomodation

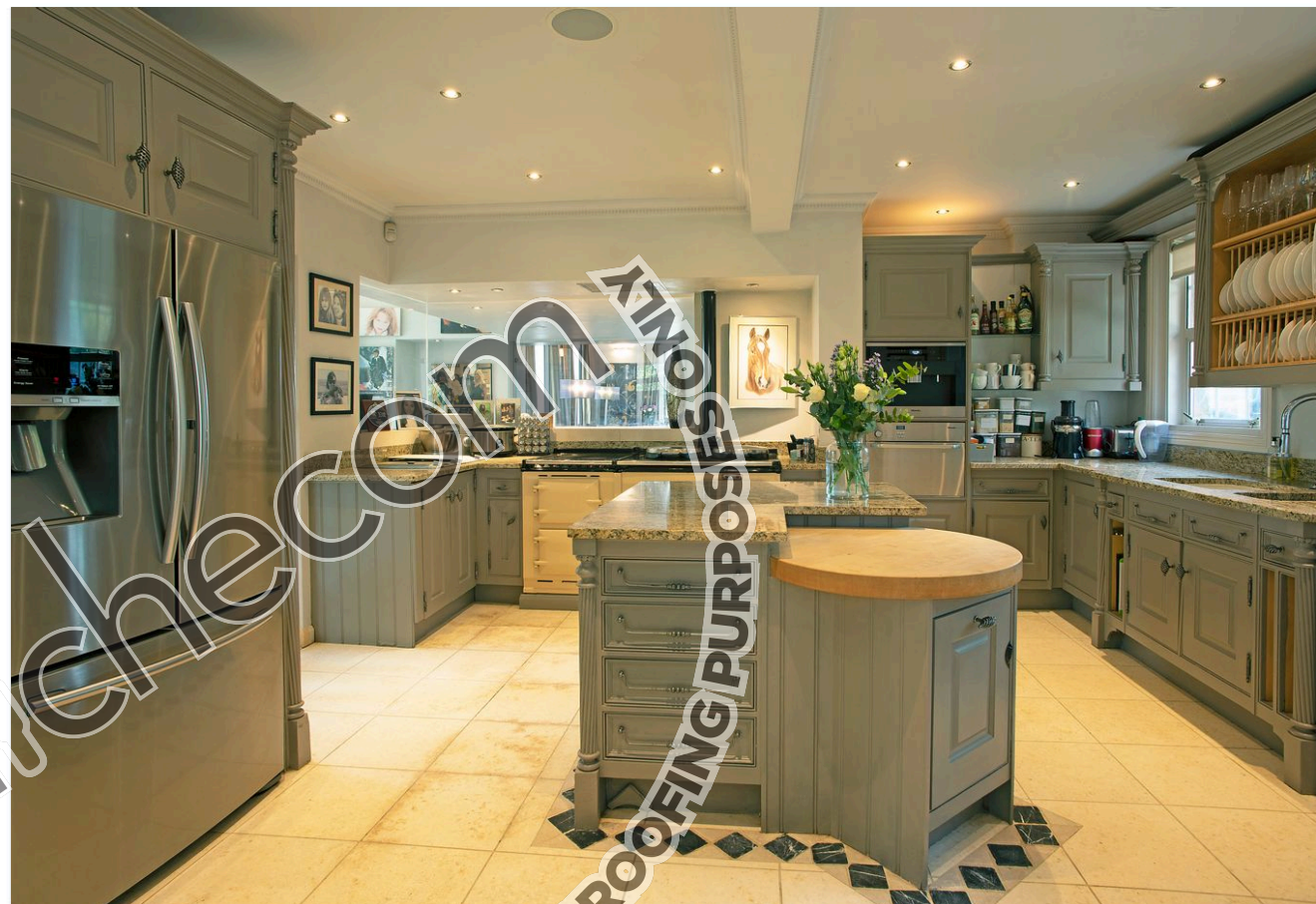
There are two further detached brick and flint buildings being a one bedroom guest lodge and a cottage currently split into two staff flats with adjoining garages.

## Location

Situated to the north of London in the county of Buckinghamshire, the location is both convenient and accessible. Amersham, 4.6 miles away, has access to Chiltern Railways and the Metropolitan line, easy for the London commute into Baker Street or Marylebone respectively. High Wycombe and the M40 are about 4.2 miles away and include direct trains to London from 33 mins.

The nearby Chiltern Hills is designated an 'Area of Outstanding Natural Beauty' offering an abundance of walking, cycling and riding opportunities. Amersham includes the Old Town, a picturesque market town and Amersham-on-the-Hill, with a selection of shops and restaurants. The Old Town includes many independent shops and boutiques, as well as a great range of dining choices from inns to restaurants.

Buckinghamshire is renowned for its choice and standard of schooling, and is one of the last counties to maintain the traditional grammar school system. The independent sector has The Beacon School (boys) and Heatherton House (girls), while the state possibilities include The Royal Grammar School for boys and Beaconsfield High School for girls.









**Equestrian facility with Stables  
(AVAILABLE BY SEPARATE NEGOTIATIONS)**

From the main entrance, a spur off the driveway leads to an impressive equestrian facility featuring a charming courtyard with stables, a staff flat, tack room, horse walker, ménage, and lunging arena. This facility is available through separate negotiation and, when combined with the main property, totals approximately 17.8 acres. Holmer Ridings offers an exceptional family home with limitless opportunities for leisure and lifestyle for equestrian enthusiasts.

**Services:**

Mains water and electricity, oil fired central heating and two private drainage systems (Services not tested)

**Council Tax Band: H**

**EPC Rating Main House: E**

**EPC Rating to Lodge: G**

**EPC Rating to Cottage: F**

**Local Authority:**

Buckinghamshire Council

**English Heritage Legacy ID: 44482**

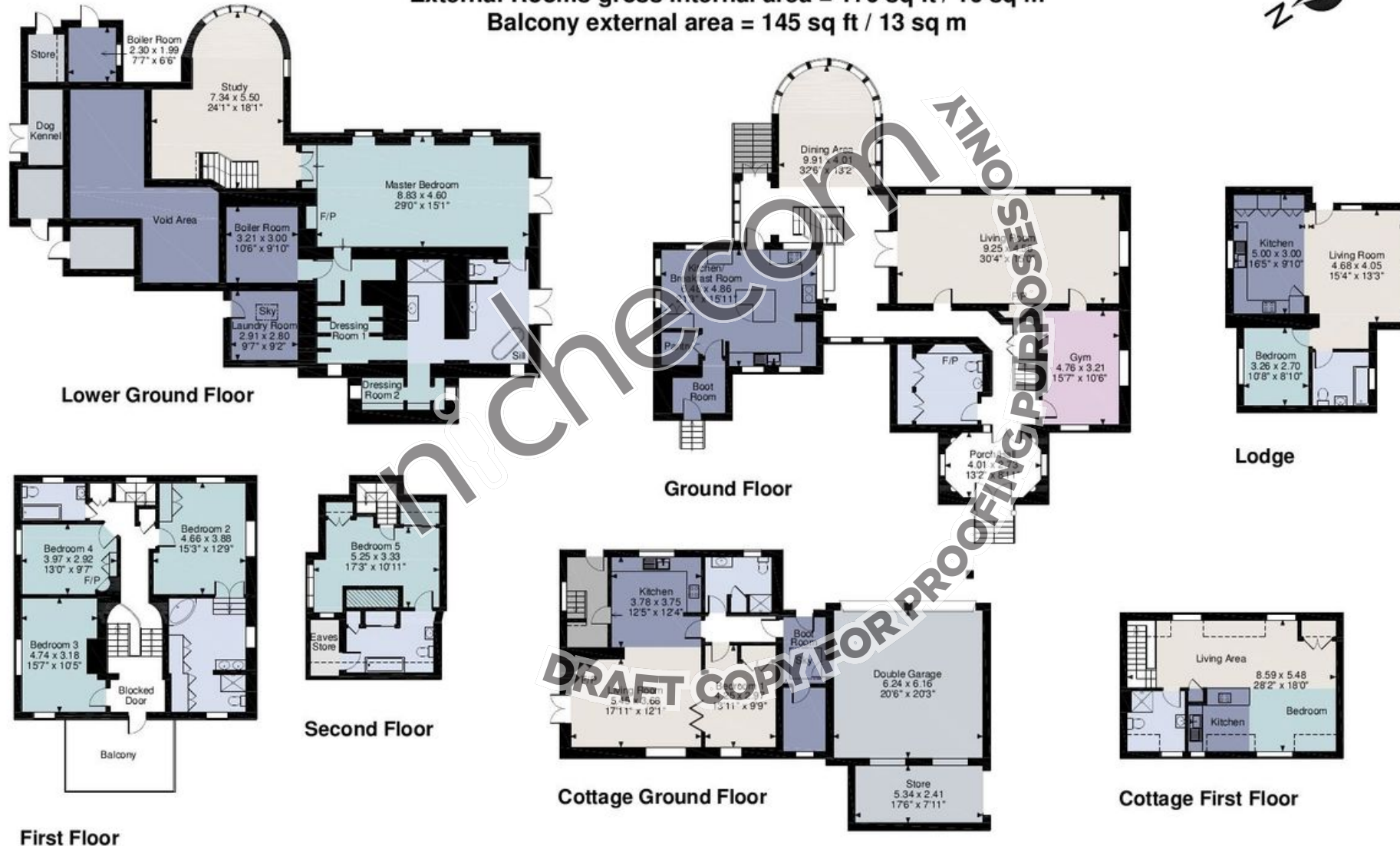
**Directions:**

Coming from the M40, take junction 2 following the A355 towards Beaconsfield/Amersham/Slough. When approaching Amersham Town after approximately 9 miles, take the A355, followed by the A404, Whielden Lane. Continue for 2.7 miles before turning right into Sheepcote Dell Road. After 0.5 miles you will find Holmer Ridings on the right hand side.





**Holmer Ridings, High Wycombe**  
**Main House gross internal area = 4,886 sq ft / 454 sq m**  
**Garage gross internal area = 414 sq ft / 38 sq m**  
**Cottage & Store gross internal area = 1,415 sq ft / 131 sq m**  
**Lodge gross internal area = 577 sq ft / 54 sq m**  
**External Rooms gross internal area = 176 sq ft / 16 sq m**  
**Balcony external area = 145 sq ft / 13 sq m**



**FOR ILLUSTRATIVE PURPOSES ONLY - NOT TO SCALE**  
 The position & size of doors, windows, appliances and other features are approximate only.  
 □ □ □ Denotes restricted head height  
 © ehous. Unauthorised reproduction prohibited. Drawing ref. dig/8403758/CGI



BARTRAMS

Tel: 01494 870707

Kings Head House, 15 London End  
Beaconsfield, Buckinghamshire HP9 2HN

BARTRAMS.CO.UK

DISCLAIMER: Bartrams gives notice that the comments, condition, descriptions, measurements and necessary permissions for use and occupation are given in good faith and believed to be correct but cannot be relied on as true statements and representations of fact. They do not constitute part of an offer or contract. Potential purchasers should inspect personally in order to satisfy the correctness of them. Neither Bartrams or any of their employees has any authority to make or give any representation or warranty whatsoever in relation to this property. They do not hold themselves responsible for any expense incurred in viewing the same or any liability in respect of abortive viewings. The property is offered for sale subject to contract.