

To Let



13, The Grove 150 Bath Road, Maidenhead, Berkshire SL6 4LB

£1,350 pcm

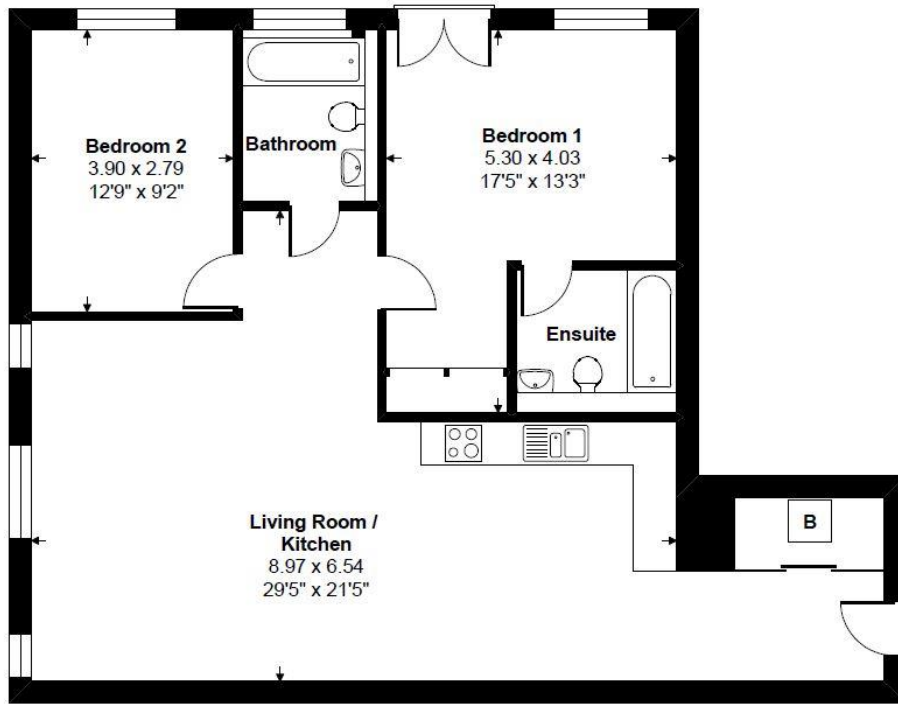
Two bedroom, two bathroom first floor apartment of approx. 922 sq ft set within this imposing building located on the western outskirts, which is completed to an extremely high standard of finish and specification. Two Double Bedrooms, Two Bathrooms, Underfloor Heating, Open Plan Living/Dining/Fitted Kitchen, Double Glazing, Allocated Parking, Security Entry System.

Date available: 25/09/21

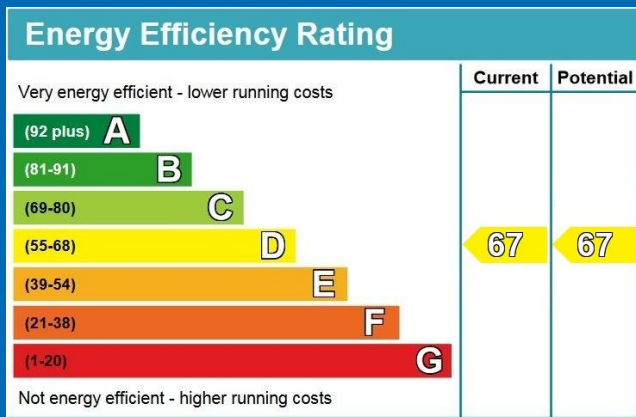
Unfurnished

www.braxtons.co.uk

Tel 01628 674234



Unit 13
Approx 87.99 sq m - 947 sq ft
(Gross Internal)



Tenant Information

Fixed Costs that apply to all Tenants:

Holding Deposit of 1 weeks rent.

Tenants are required to pay a minimum of 1 calendar month's rent in advance in most instances and a Tenancy Deposit equivalent to 5 or 6 weeks rental.

A pet premium of £75 per month will apply if you wish to keep pets and the Landlord allows permission.

Further information on our fees can be found in our Guide to Tenants.



For clarification, we have prepared these particulars as a general guide. We have not tested the services, appliances and specific fittings. Whilst these particulars are believed to be correct their accuracy is not guaranteed and are given without responsibility. They do not form part of any contract.