



2 Church View, Maidenhead, Berkshire SL6 3JQ

2 CHURCH VIEW, MAIDENHEAD BERKSHIRE SL6 3JQ

GUIDE PRICE: £525,000 FREEHOLD

Occupying a desirable position with stunning rural views of COUNTRYSIDE and White Waltham Airfield, this two bedroom semi-detached house which could now benefit from modernisation but offers plenty of SCOPE TO EXTEND (with lapsed planning consent for a double storey rear extension - Ref. No: 19/02397/FULL) and a GENEROUS REAR GARDEN. This house is offered for sale with NO ONWARD CHAIN and in our opinion, presents a fantastic opportunity to create your dream home. The property features a spacious double-aspect living room, sitting/dining room/third bedroom, kitchen, two double bedrooms upstairs and a family bathroom. The property benefits from two parking spaces opposite and the immediate frontage of the property could easily be transformed into driveway parking (STPP). The extensive private rear garden backs onto open countryside with views of the airfield.

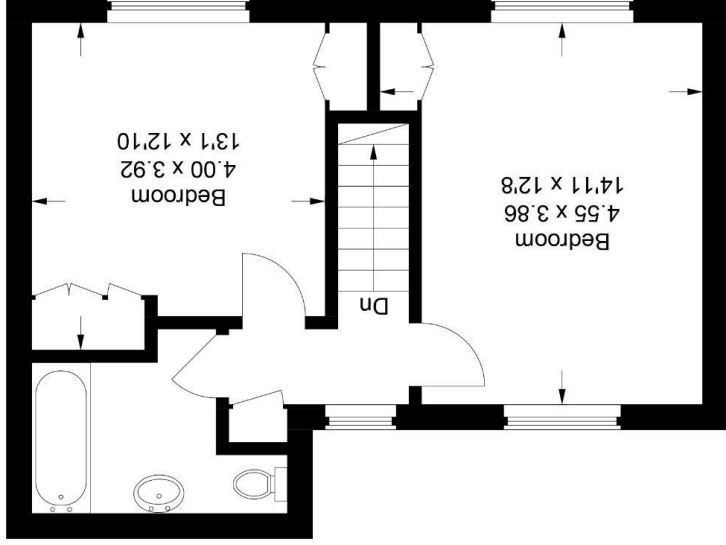
*POTENTIAL TO EXTEND (STPP) *REFURB POTENTIAL *TWO DOUBLE BEDROOM SEMI-DETACHED HOUSE *VIEWS OF COUNTRYSIDE AND WHITE WALTHAM AIRFIELD *DESIREABLE LOCATION IN WHITE WALTHAM VILLAGE *DOUBLE ASPECT LIVING ROOM *NO ONWARD CHAIN *OIL CENTRAL HEATING *EXTENSIVE PRIVATE REAR GARDEN *TWO PARKING SPACES OPPOSITE WITH POTENTIAL FOR DRIVEWAY (STPP) *EPC RATING D *COUNCIL TAX BAND E



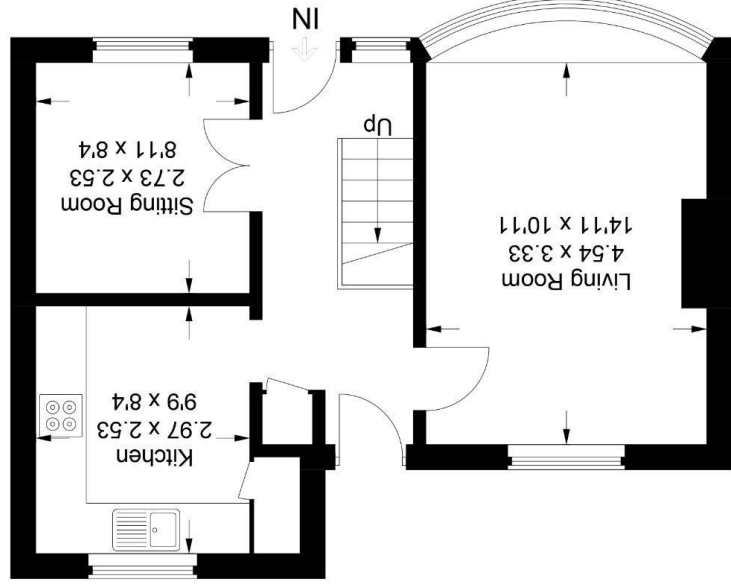




First Floor



Ground Floor



Approximate Gross Internal Area
 Ground Floor = 41.9 sq m / 451 sq ft
 First Floor = 40.4 sq m / 435 sq ft
 Total = 82.3 sq m / 886 sq ft



This plan is for layout guidance only. Not drawn to scale unless stated. Windows and door openings are approximate. Whilst every care is taken in the preparation of this plan, please check all dimensions, shapes and compass bearings before making any decisions reliant upon them.
 © CJ Property Marketing Ltd Produced for Braxton