



25 THE PICTUREHOUSE, BRIDGE AVENUE, MAIDENHEAD, BERKSHIRE, SL6 1AF

*Please note the apartment on sale is not visible from the main photograph.

25 THE PICTUREHOUSE, BRIDGE AVENUE, MAIDENHEAD, BERKSHIRE, SL6 1AF

GUIDE PRICE £435,000 SHARE OF FREEHOLD

NO ONWARD CHAIN - A luxury two bedroom apartment situated on the third floor of the impressive landmark Picturehouse Town Centre development by award-winning Shanly homes within just a short walk to Maidenhead railway station (Elizabeth Line). The apartment consists of an open-plan kitchen/living/dining area leading onto a large balcony with far-reaching views, contemporary kitchen units and integrated Siemens appliances. Both bedrooms benefit from fitted wardrobes with the master bedroom featuring a luxury en-suite. This apartment is completed by a family bathroom, colour video and audio entry system and private underground parking. EPC RATING B. To be sold with a Share Of Freehold.

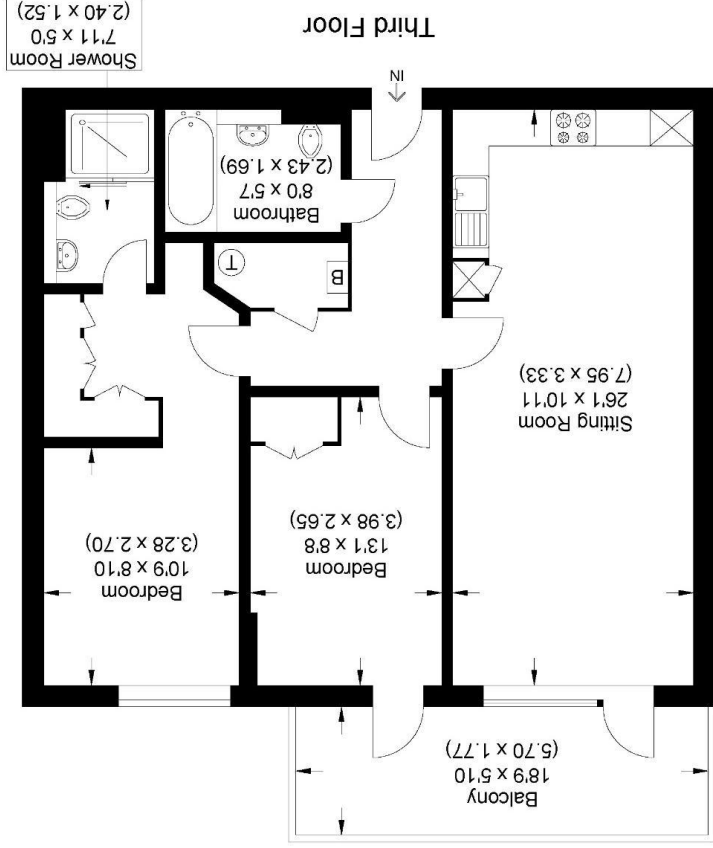
- LUXURY THIRD FLOOR, TWO BEDROOM APARTMENT
- AWARD-WINNING SHANLY HOMES
- OPEN PLAN KITCHEN/LIVING/DINING AREA
- LARGE BALCONY WITH FAR-REACHING VIEWS
- CONTEMPORARY KITCHEN UNITS WITH SIEMENS APPLIANCES
- TWO DOUBLE BEDROOMS WITH FITTED WARDROBES
- MASTER BEDROOM WITH EN-SUITE
- COLOUR VIDEO AND AUDIO ENTRY SYSTEM
- PRIVATE UNDERGROUND PARKING
- SHARE OF FREEHOLD
- AWARD-WINNING SHANLY HOMES
- EPC RATING B
- COUNCIL TAX BAND C





For clarification we wish to inform prospective purchasers that we have prepared these sales particulars as a general guide. We have not carried out a detailed survey nor tested the services, appliances and specific fittings. Room sizes should not be relied upon for carpets, furnishings and appliances. Whilst these particulars are believed to be correct their accuracy is not guaranteed and are given without responsibility. They do not form part of any contract.

Illustration for identification purposes only,
measurements are approximate, not to scale.



The Picture House
Approximate Gross Internal Area
71.39 sq m / 768.43 sq ft

