



23 Woodhurst South, Ray Mead Road, Maidenhead, Berkshire, SL6 8NZ

23 Woodhurst South, Ray Mead Road, Maidenhead, Berkshire, SL6 8NZ

Guide Price £895,000 Share of Freehold

An exclusive gated development just downstream from Boulters Lock, a rare opportunity to acquire a stunning three bedroom penthouse apartment with direct views toward the River Thames and featuring a large paved roof terrace providing entertaining space. The property features a generous "open plan" living/dining/kitchen and a 20' x 16'5" master bedroom with en-suite bath/shower room and dressing room. An internal inspection is most strongly recommended.

ELECTRIC ENTRANCE GATES WITH SECURITY ENTRY PHONE SYSTEM *COMMUNAL ENTRANCE HALL WITH LIFT AND STAIRCASE RISING TO THE TOP FLOOR *PRIVATE ENTRANCE LOBBY *CLOAKROOM *LARGE OPEN PLAN KITCHEN/DINING/LIVING ROOM WITH ACCESS ON TO THE ROOF TERRACE *MASTER BEDROOM WITH EN-SUITE BATH/SHOWER ROOM AND DRESSING ROOM *GUEST BEDROOM WITH EN-SUITE SHOWER *BEDROOM THREE *APPROX 3 ACRES OF COMMUNAL GARDENS AND GROUNDS INCLUDING AN OUTDOOR SWIMMING POOL AND TENNIS COURT *GARAGE IN BLOCK *RESIDENT AND VISITOR PARKING *PRIVATE MOORING *EPC RATING C

Council Tax Band G – currently £2597.23 per annum

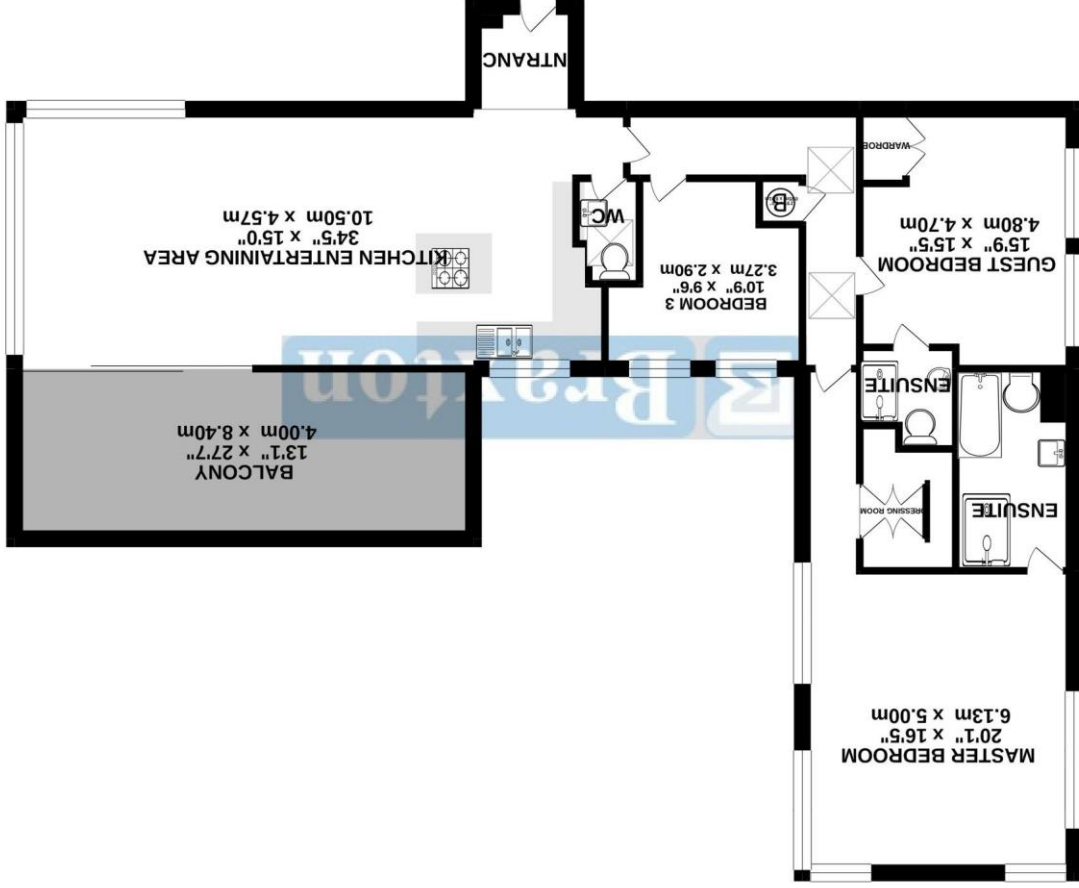
Lease remaining – 980 years

Service charge - £6,000 per annum





PENTHOUSE
1453 sq.ft. (135.0 sq.m.) approx.



Water every attempt has been made to ensure the accuracy of the figures contained here. Measurements of doors, windows, rooms and any other items are approximate and no responsibility is taken for any error, omission or mis-statement. This plan is for illustrative purposes only and should be used as such by any prospective purchaser. The services, systems and appliances shown have not been tested and no guarantee as to their operability or efficiency can be given.
Made with Metropix ©2020

39-41 High Street, Maidenhead, Berkshire SL6 1JF
Tel: 01628 674234 Fax: 01628 785432
Email: property@braxtons.co.uk
braxtons.co.uk
Residential Sales | Land & New Homes | Properties to Let | Landlords, Lettings and Management Services

