



30 Boulders Court, Maidenhead, Berkshire SL6 8TH

**30 BOULTERS COURT
MAIDENHEAD
BERKSHIRE SL6 8TH**

PRICE: £575,000 FREEHOLD

Situated at the end of a cul-de-sac within Maidenhead's sought after river area just a short walk from the River Thames at Boulters Lock. A beautifully presented town house refurbished throughout by the existing owners. This spacious property offers flexible accommodation over three floors featuring high specification kitchen, luxury shower room, generous living/dining room, garden room/bedroom 3, driveway parking, integral garage and a well maintained west facing rear garden. Maidenhead town centre and railway station (Paddington/ Elizabeth line) are also within easy reach.

***DRIVEWAY PARKING *GARAGE *THIRD
BEDROOM/GARDEN ROOM *UTILITY ROOM
*PRIVATE WEST FACING REAR GARDEN
*TWO LARGE DOUBLE BEDROOMS ON
SECOND FLOOR *LARGE LIVING/DINING
ROOM *QUALITY FITTED KITCHEN *SOUGHT
AFTER RIVER AREA *EASY REACH OF TOWN
AND STATION *EPC RATING D**

Council Tax band E – currently £1904.63 per annum



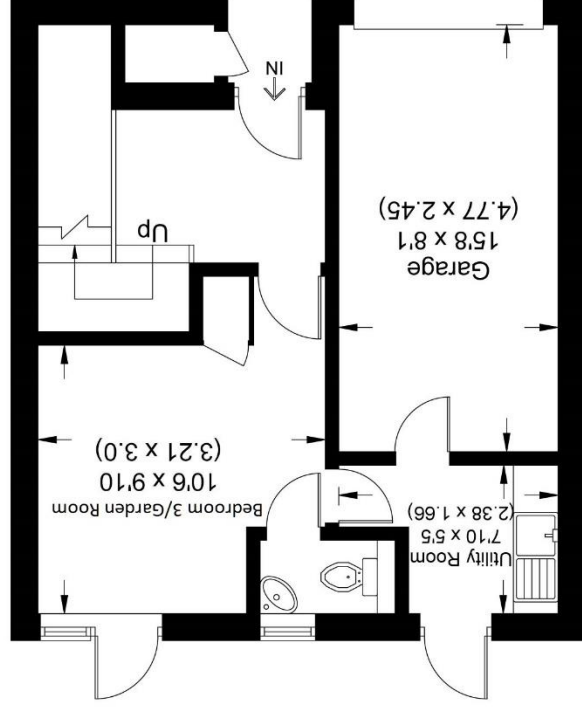


Boulvers Court

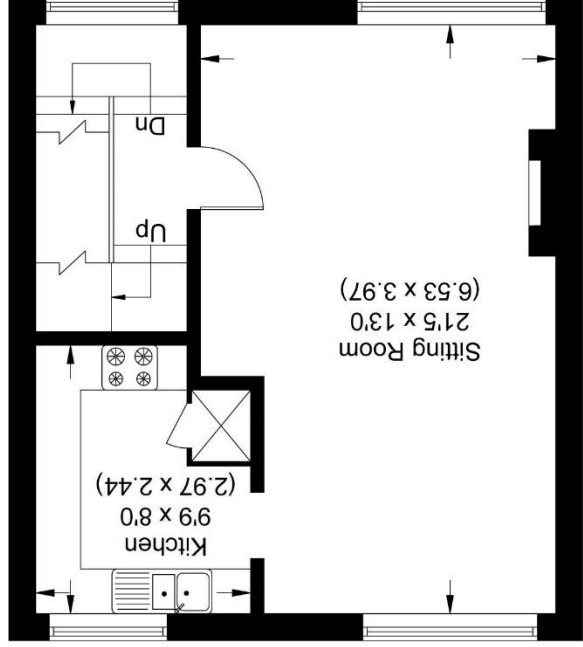
Approximate Gross Internal Area 113.37 sq m / 1220.30 sq ft
 (Including Garage)
 Garage Area 11.69 sq m / 125.83 sq ft



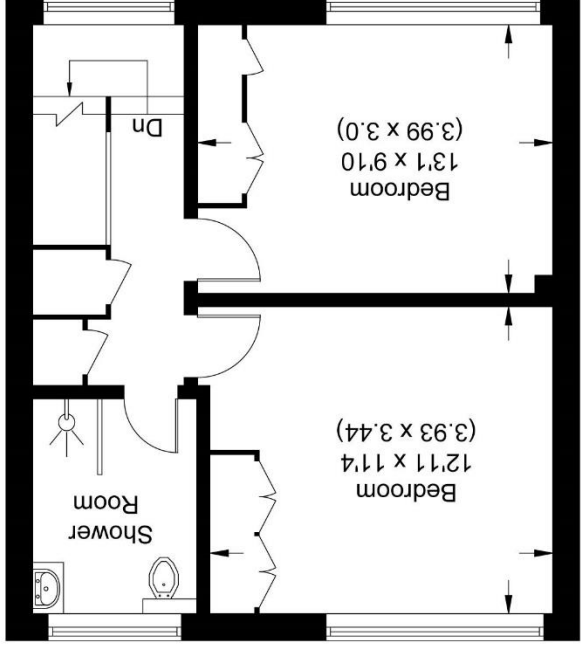
Illustration for identification purposes only,
 measurements are approximate, not to scale.



Ground Floor



First Floor



Second Floor

sizes should not be relied upon for carpets, furnishings and appliances. Whilst these particulars are believed to be correct their accuracy is not guaranteed and are given without responsibility. They do not form part of any contract.
 specific fittings. Room



39-41 High Street, Maidenhead, Berkshire SL6 1JF
 Tel: 01628 674234 Fax: 01628 785432
 Email: property@braxtons.co.uk
 braxtons.co.uk
 Residential Sales | Land & New Homes | Properties to Let | Landlords, Lettings and Management Services

