



**Corner Cottage, Altwood Close, Maidenhead, Berkshire, SL6 4PP.**

## CORNER COTTAGE

ALTWOOD CLOSE, MAIDENHEAD,  
BERKSHIRE, SL6 4PP.

**PRICE: £1,250,000 FREEHOLD**

A substantial extended detached family home with the additional benefit of a self-contained 2/3 bedroom annexe (Dormy Cottage). Located on the sought after Altwood Close, this attractive property offers spacious and versatile accommodation throughout. In the main house, the ground floor features two generous reception rooms, a kitchen/breakfast room and separate utility room whilst upstairs comprises main bedroom with dressing room and en-suite bathroom, three further bedrooms and two further bath/shower rooms. The annexe comprises reception room, kitchen, three bedrooms and two bathrooms. Outside there is a generous rear garden, double garage and driveway parking for several vehicles.

\*ENTRANCE HALL \*CLOAKROOM \*SITTING ROOM  
\*DINING ROOM  
\*KITCHEN/BREAKFAST ROOM \*UTILITY ROOM  
\*MAIN BEDROOM WITH DRESSING ROOM & EN-SUITE BATHROOM \*THREE FURTHER BEDROOMS \*TWO BATH/SHOWER ROOMS  
\*ANNEXE: RECEPTION ROOM \*KITCHEN \*CLOAKROOM \*THREE BEDROOMS \*TWO BATHROOMS \*GENEROUS REAR GARDEN \*DOUBLE GARAGE \*DRIVEWAY PARKING FOR SEVERAL VEHICLES \*EPC RATING: MAIN HOUSE & DORMY COTTAGE BOTH D

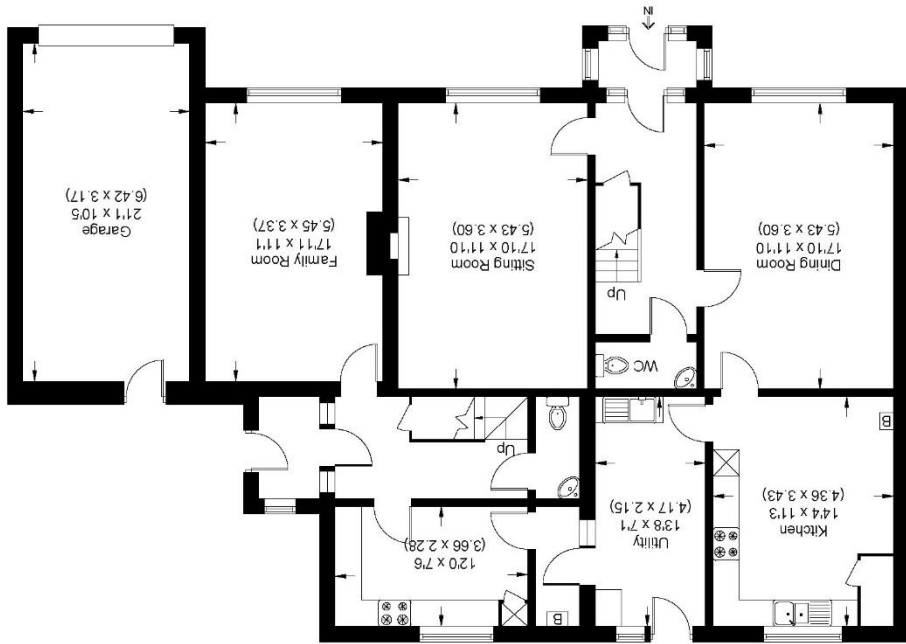
Council Tax Band F – currently £2250.93 per annum



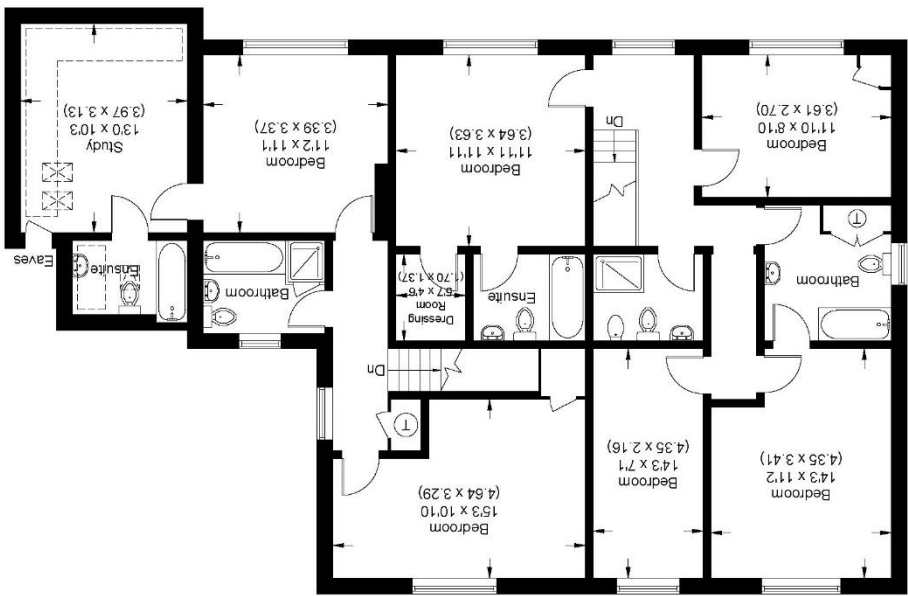


For clarification we wish to inform prospective purchasers that we have prepared these sales particulars as a general guide. We have not carried out a detailed survey nor tested the services, appliances and specific fittings. Room sizes should not be relied upon for carpets, furnishings and appliances. Whilst these particulars are believed to be correct their accuracy is not guaranteed and are given without responsibility. They do not form part of any contract.

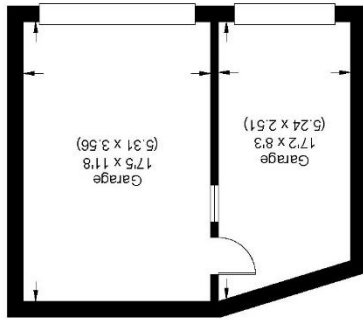
Ground Floor



First Floor



Garage



**Altwood Close**  
 Approximate Gross Internal Area 282.20 sq m / 3037.57 sq ft  
 (Including Garage)  
 Garage Area 52.41 sq m / 564.13 sq ft

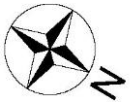


Illustration for identification purposes only, measurements are approximate, not to scale.