

To Let



20 Islet Park Drive, Maidenhead, Berkshire SL6 8LF

£4,500 pcm

Furnished 4-Bed Detached Home Near River Thames

Immaculately presented and newly available, this furnished 4-bedroom detached house offers stylish open-plan living, a modern kitchen, conservatory, study, and two bathrooms. Benefits include a double garage, off-street parking, and a private garden. Located in a quiet road near the River Thames and close to Maidenhead town centre with excellent transport links.

Note: A separate one-bedroom apartment above the garage will be used by the landlord during the tenancy.

Date available: Now

Furnished

www.braxtons.co.uk

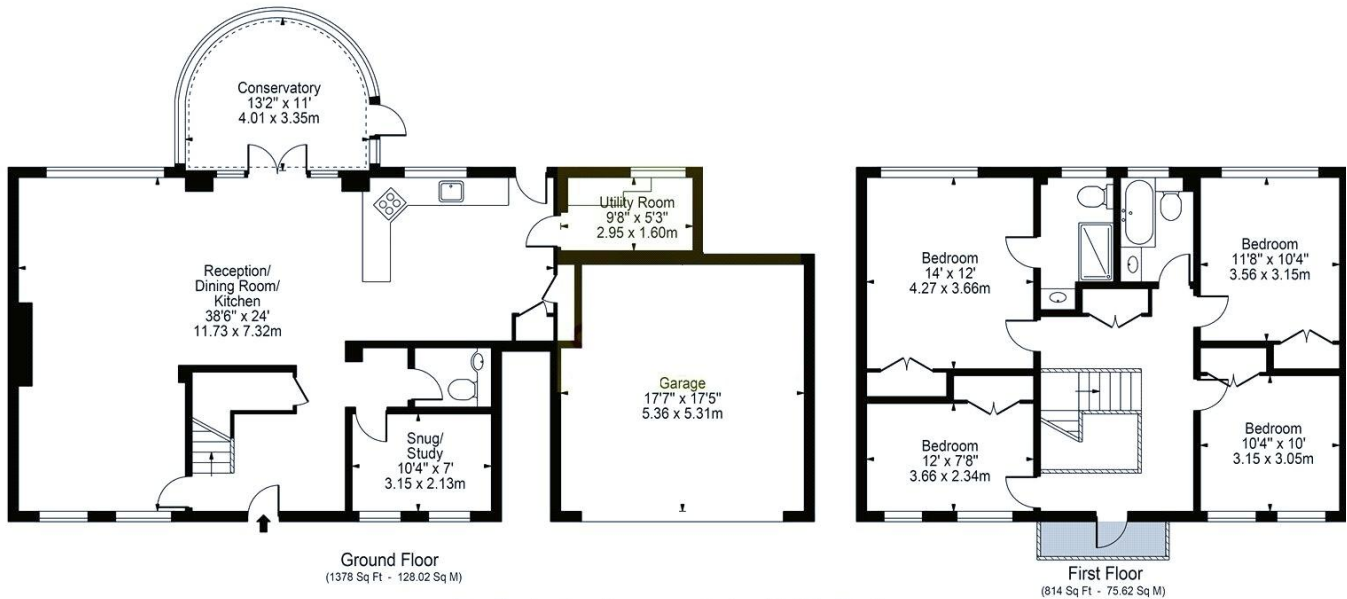
Tel 01628 674234

Islet Park Drive, SL6

Approx. Total Internal Area 2192 Sq Ft - 203.64 Sq M

(Including Garage)

Approx. Gross Internal Area Of Garage 302 Sq Ft - 28.06 Sq M



For Illustration Purposes Only - Not To Scale

This floor plan should be used as a general outline for guidance only and does not constitute in whole or in part an offer or contract. Any intending purchaser or lessee should satisfy themselves by inspection, searches, enquiries and full survey as to the correctness of each statement. Any areas, measurements or distances quoted are approximate and should not be used to value a property or be the basis of any sale or let.

Energy Efficiency Rating

Very energy efficient - lower running costs

(92 plus) **A**

(81-91) **B**

(69-80) **C**

(55-68) **D**

(39-54) **E**

(21-38) **F**

(1-20) **G**

Not energy efficient - higher running costs

Current	Potential
	84
68	



Tenant Information

Fixed Costs that apply to all Tenants:

Holding Deposit of 1 weeks rent.

Tenants are required to pay a minimum of 1 calendar month's rent in advance in most instances and a Tenancy Deposit equivalent to 5 or 6 weeks rental.

A pet premium of £75 per month will apply if you wish to keep pets and the Landlord allows permission.

Further information on our fees can be found in our Guide to Tenants.

For clarification, we have prepared these particulars as a general guide. We have not tested the services, appliances and specific fittings. Whilst these particulars are believed to be correct their accuracy is not guaranteed and are given without responsibility. They do not form part of any contract.