



CARINYA, BRAY ROAD, MAIDENHEAD, BERKSHIRE, SL6 1UF

**CARINYA, BRAY ROAD,
MAIDENHEAD, BERKSHIRE,
SL6 1UF**

**GUIDE PRICE £1,195,000
FREEHOLD**

Conveniently located close to Oldfield School and within walking distance of the town centre and approx. 0.7 miles from the mainline railway station (Paddington/Elizabeth Line). An opportunity to acquire this delightful five bedroom, two bath/shower room (one en-suite) detached family home which enjoys a secluded position with a gated driveway and provides generous living accommodation with a "hub of the house" kitchen/dining room, double aspect living room and TV/family room which could also be used as home office.

- ENTRANCE HALL WITH CLOAKS CUPBOARD • CLOAKROOM • LIVING ROOM • CONSERVATORY • KITCHEN/DINING ROOM & UTILITY ROOM • TV/FAMILY ROOM • MAIN BEDROOM WITH EN-SUITE SHOWER ROOM • FOUR FURTHER BEDROOMS & FAMILY BATHROOM • GENEROUS ENCLOSED PRIVATE REAR GARDEN WITH RAISED DECKED TERRACE • GATED DRIVEWAY PARKING LEADING TO DETACHED DOUBLE-WIDTH GARAGE • EPC RATING C • COUNCIL TAX BAND G





Approximate Gross Internal Area
 Ground Floor = 101.6 sq m / 1,094 sq ft
 First Floor = 77.0 sq m / 829 sq ft
 Garage = 29.4 sq m / 316 sq ft
 Total = 208.0 sq m / 2,239 sq ft

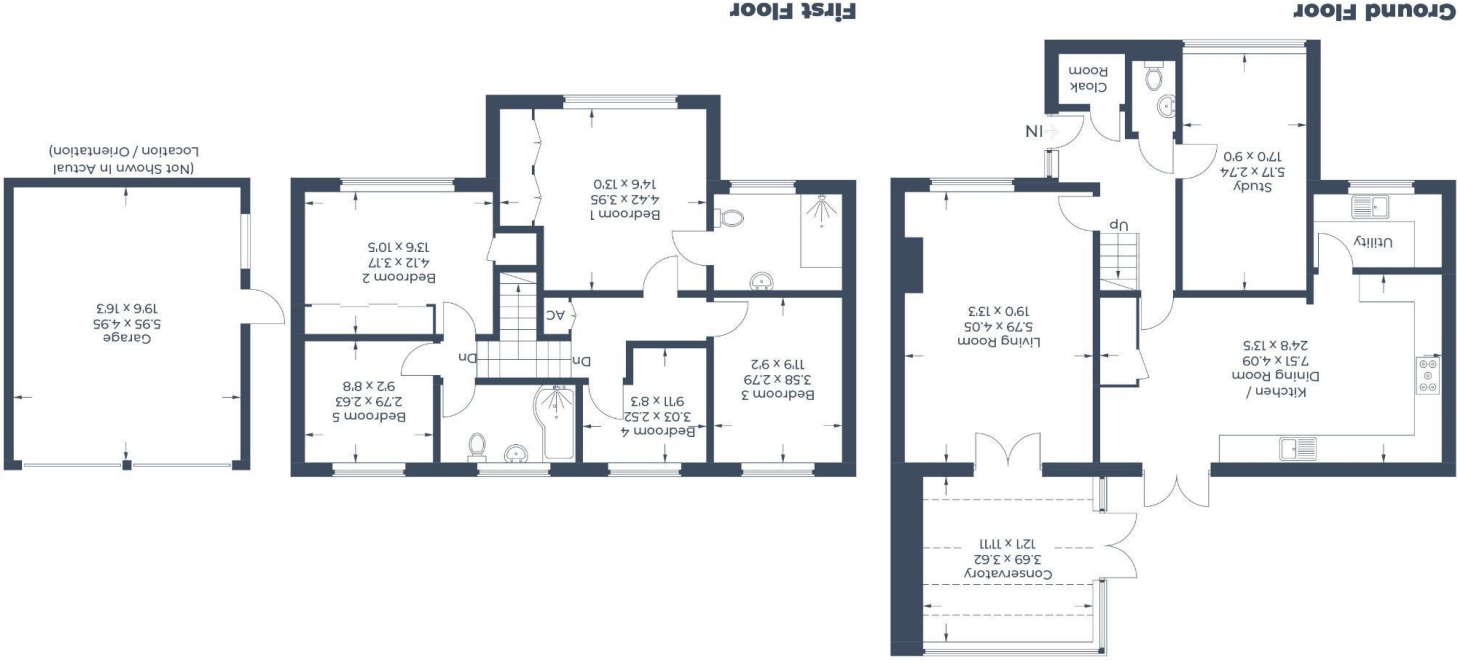


Illustration for identification purposes only,
 measurements are approximate, not to scale.
 © CJ Property Marketing Produced for Braxton - Maidenhead

For clarification we wish to inform prospective purchasers that we have prepared these sales particulars as a general guide. We have not carried out a detailed survey nor tested the services, appliances and specific fittings. Room sizes should not be relied upon for carpets, furnishings and appliances. Whilst these particulars are believed to be correct their accuracy is not guaranteed and are given without responsibility. They do not form part of any contract.



Zoopla

braxtons.co.uk

Email: property@braxtons.co.uk

Tel: 01628 674234 Fax: 01628 785432

39 High Street, Maidenhead, Berkshire SL6 1JF

Braxton



Residential Sales | Land & New Homes | Properties to Let | Landlords, Lettings and Management Services