



**13 Witchford Gate, Maidenhead, Berkshire, SL6 2FF**



# 13 WITCHFORD GATE, MAIDENHEAD BERKSHIRE SL6 2FF

**GUIDE PRICE £849,950 FREEHOLD**

An opportunity to acquire this delightful five-bedroom link detached family house which provides generous living accommodation arranged over three floors located toward the end of a cul-de-sac overlooking communal grounds. The property features a stunning kitchen/breakfast room with direct access out onto the rear garden, a generous living room, a tv family room, study and is conveniently located for Holyport College and Village Green as well as a local shops, Holyport Primary School, Clarendon & Holyport Surgery, and access to Junction 8/9 of the M4 Motorway.

ENTRANCE HALL \*CLOAKROOM \*LIVING ROOM WITH FEATURE FIREPLACE \*KITCHEN/BREAKFAST ROOM \*TV/FAMILY ROOM \*STUDY \*MAIN BEDROOM WITH EN-SUITE SHOWER ROOM \*THREE FURTHER FIRST BEDROOMS & FAMILY BATHROOM \*SECOND FLOOR GUEST BEDROOM WITH EN-SUITE SHOWER ROOM \*ENCLOSED REAR GARDEN \*DRIVEWAY PARKING \*GARAGE \*UNDER FLOOR HEATING & RADIATORS \*EPC RATING C \*COUNCIL TAX BAND G



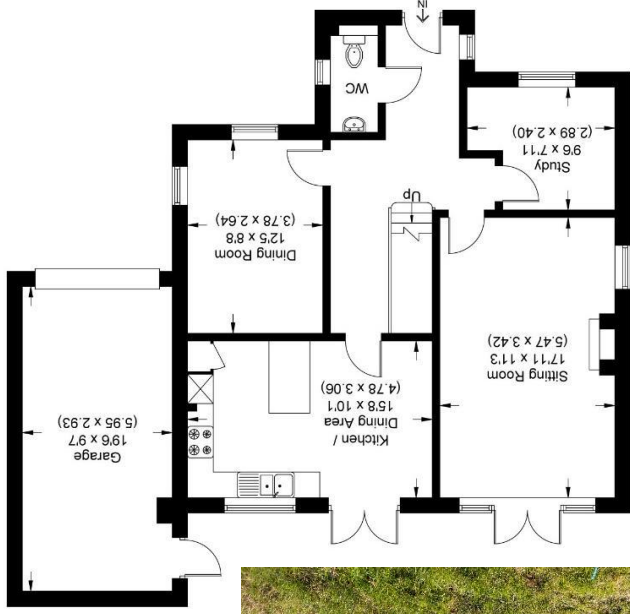




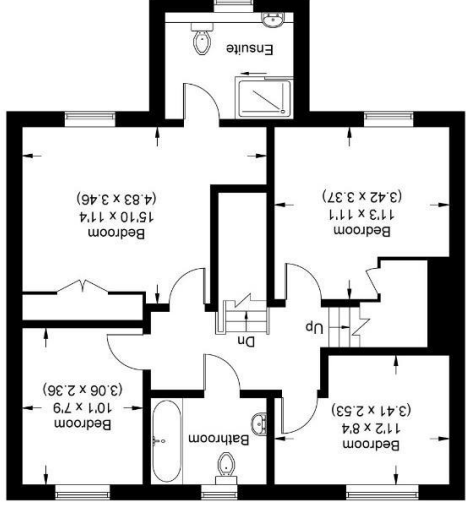


### Witchford Gate

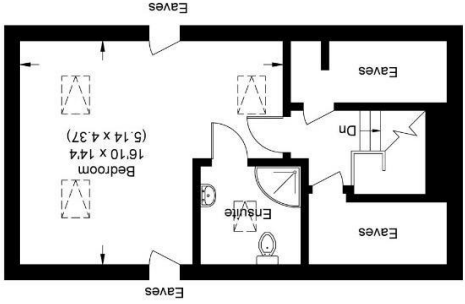
Approximate Gross Internal Area 159.18 sq m / 1713.40 sq ft  
 (Excluding Garage & Eaves)  
 Garage Area 17.43 sq m / 187.61 sq ft  
 Total Area 176.61 sq m / 1901.01 sq ft (Including Garage)



Ground Floor



First Floor



Second Floor

Illustration for identification purposes only,  
 measurements are approximate, not to scale.

39-41 High Street, Maidenhead, Berkshire SL6 1JF  
 Tel: 01628 674234 Fax: 01628 785432  
 Email: [property@braxtons.co.uk](mailto:property@braxtons.co.uk)

**braxtons.co.uk**

Residential Sales | Land & New Homes | Properties to Let | Landlords, Lettings and Management Services

