



6A Crescent Drive, Maidenhead, Berkshire, SL6 6AQ

6A Crescent Drive, Maidenhead, Berkshire, SL6 6AQ

Guide Price £1,000,000 Freehold

An opportunity to acquire this stunning four-bedroom detached family home, occupying a cul-de-sac position within less than 0.5 Miles of the town centre and mainline railway station (Paddington/Elizabeth Line). The property has been extended and extensively refurbished recently by the present owners to a high level of finish and specification, featuring a hub of the house McEvoy & Rowley Kitchen/Dining/Family and two generous reception rooms and an internal inspection is most strongly recommended. NO ONWARD CHAIN
EPC Rating - C

**ENTRANCE HALL *CLOAKROOM *LIVING ROOM
*LARGE OPEN PLAN KITCHEN/DINING/FAMILY ROOM
*TV ROOM *UTILITY ROOM * STUDY AREA *MASTER
BEDROOM WITH VAULTED CEILING AND EN-SUITE
BATHROOM *THREE FURTHER BEDROOMS *FAMILY
SHOWER ROOM *DELIGHTFUL ENCLOSED LOW
MAINTENANCE REAR GARDEN *DRIVEWAY PARKING
*CONVENIENT FOR TOWN CENTRE AND MAINLINE
RAILWAY STATION *EPC RATING C *COUNCIL TAX
BAND F**

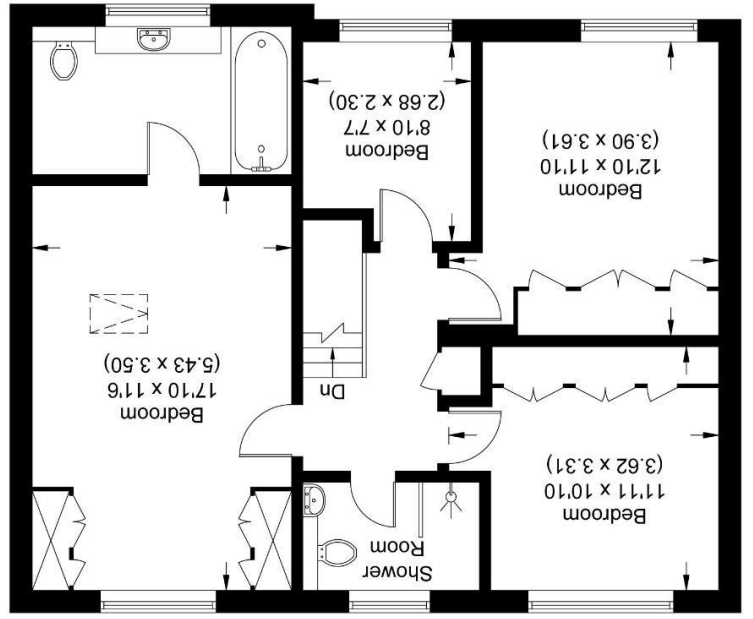
Directions: SAT NAV - SL6 6AQ



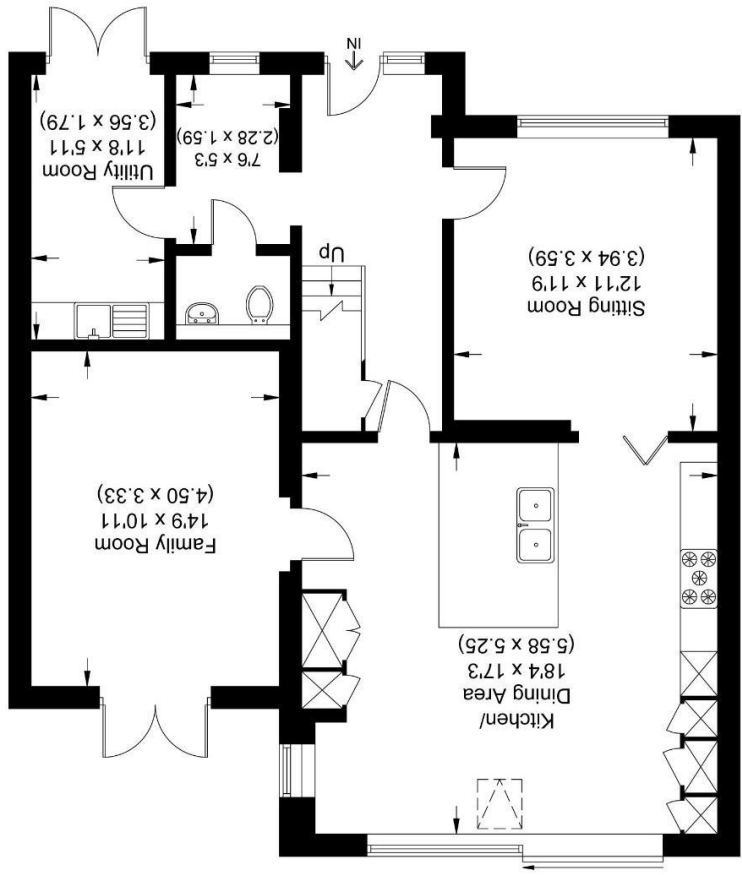


Illustration for identification purposes only, measurements are approximate, not to scale.

First Floor



Ground Floor



Approximate Gross Internal Area 152.03 sq m / 1636.43 sq ft

Crescent Drive

