



90 FORLEASE ROAD, MAIDENHEAD, BERKSHIRE, SL6 1XY

**90 FORLEASE ROAD,
MAIDENHEAD, BERKSHIRE, SL6
1XY**

**GUIDE PRICE £825,000
FREEHOLD**

Conveniently located within walking distance of Oldfield School, the town centre and within approx. 0.5 miles of the mainline Railway Station (Paddington/Elizabeth Line). A delightful four-bedroom detached family house occupying a small cul-de-sac position which could now benefit from modernisation and provides, in our opinion, good size living accommodation. The property features an en-suite bathroom to the main bedroom, a separate living and dining room, a kitchen with separate utility room, a double garage and an enclosed South facing rear garden. NO CHAIN

***ENTRANCE HALL *CLOAKROOM
*LIVING ROOM *DINING ROOM
*KITCHEN *UTILITY ROOM *MAIN
BEDROOM WITH EN-SUITE BATHROOM
*THREE FURTHER BEDROOMS *FAMILY
BATHROOM *DRIVEWAY PARKING
*DOUBLE WIDTH GARAGE *ENCLOSED
SOUTH FACING REAR GARDEN *SCOPE
TO EXTEND (STPC) *NO CHAIN *EPC
RATING D *COUNCIL TAX BAND E**





Forlease Road

Approximate Gross Internal Area = 118.7 sq m / 1277 sq ft
 Garage Area = 24.2 sq m / 260 sq ft
 Total = 142.9 sq m / 1538 sq ft

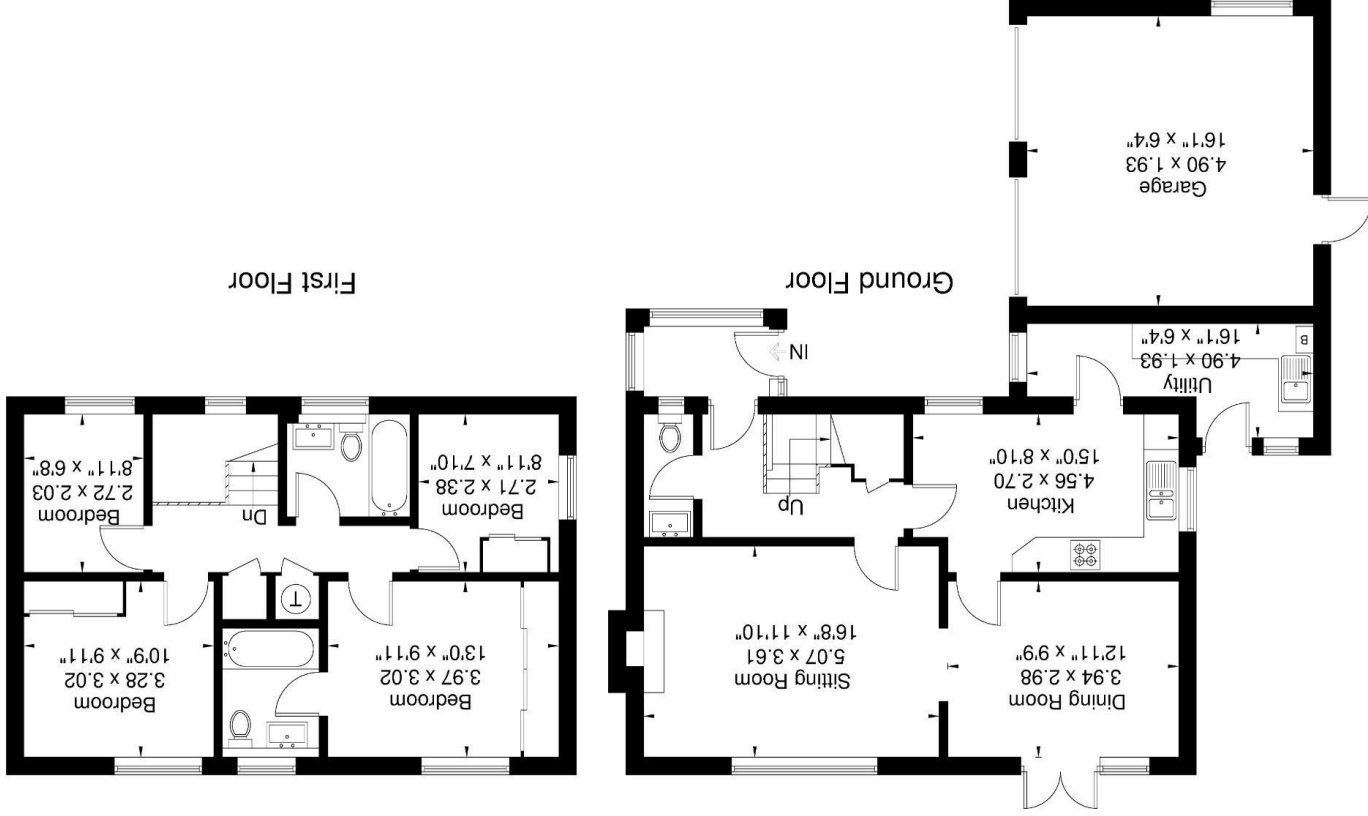


Illustration for identification purposes only,
 measurements are approximate, not to scale.

For clarification we wish to inform prospective purchasers that we have prepared these sales particulars as a general guide. We have not carried out a detailed survey nor tested the services, appliances and specific fittings. Room sizes should not be relied upon for carpets, furnishings and appliances. Whilst these particulars are believed to be correct their accuracy is not guaranteed and are given without responsibility. They do not form part of any contract.



braxtons.co.uk

Email: property@braxtons.co.uk

Tel: 01628 674234 Fax: 01628 785432

39 High Street, Maidenhead, Berkshire SL6 1JF

Residential Sales | Land & New Homes | Properties to Let | Landlords, Lettings and Management Services

