

39-41 High Street, Maidenhead, Berkshire SL6 1JF

Tel: 01628 674234 Fax: 01628 785432

Email: property@braxtons.co.uk

braxtons.co.uk



Residential Sales | Land & New Homes | Properties to Let | Landlords, Lettings and Management Services



GUIDE PRICE: £695,000 FREEHOLD

6 FONTWELL CLOSE, MAIDENHEAD, BERKSHIRE SL6 5JX

Occupying a cul-de-sac position on this popular development close to acres of National Trust Land at Maidenhead Thicket and within walking distance of Newlands School for Girls and local shops.

An opportunity to acquire this newly refurbished three-bedroom detached bungalow which is offered for sale with NO CHAIN. The property features a generous living room with direct access onto the rear garden, study/dining room, re-fitted kitchen, family shower room, three good size bedrooms and driveway parking.

***RECENTLY REFURBISHED *LIVING ROOM *STUDY/DINING ROOM *RE-FITTED KITCHEN *RE-FITTED FAMILY SHOWER ROOM *THREE BEDROOMS *ENCLOSED REAR GARDEN *CLOSE TO NEWLANDS, SHOPS & NATIONAL TRUST LAND *CUL-DE-SAC POSITION *NO CHAIN *EPC RATING C *COUNCIL TAX BAND E**

DIRECTIONS

Sat Nav - SL6 5JX

ACCOMMODATION

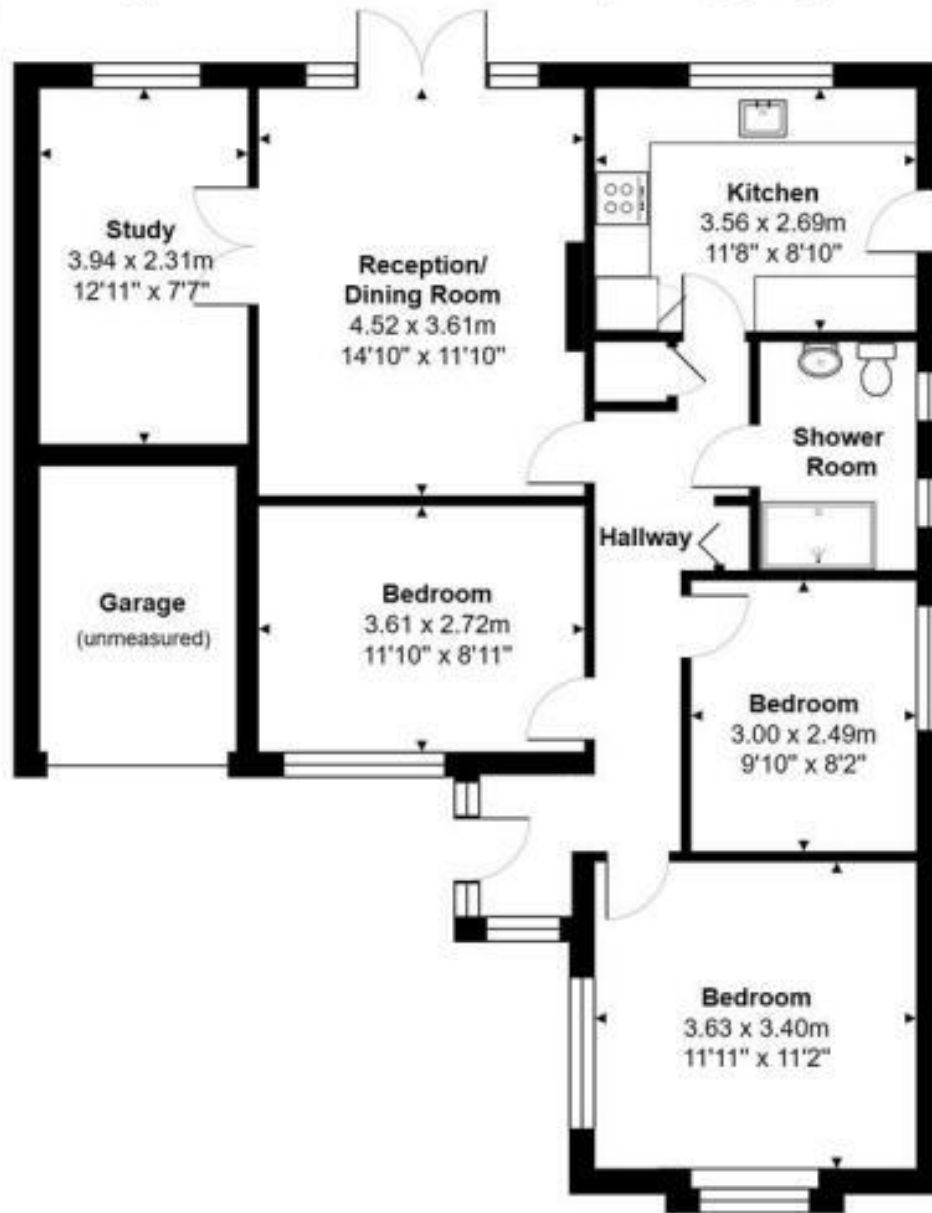




For clarification we wish to inform prospective purchasers that we have prepared these sales particulars as a general guide. We have not carried out a detailed survey nor tested the services, appliances and specific fittings. Room sizes should not be relied upon for carpets, furnishings and appliances. Whilst these particulars are believed to be correct their accuracy is not guaranteed and are given without responsibility. They do not form part of any contract.

Fontwell Close, Maidenhead, SL6 5JX

Approx. Total Area: 83.9 m² ... 903 ft² (excluding garage)



Whilst every attempt has been made to ensure the accuracy of the floorplans contained here, measurements of doors, windows and rooms are approximate and no responsibility is taken for any error, omission or mis-statement. These plans are for representation purposes only.

