



**BELLAVISTA, 32 HARVEST HILL ROAD, MAIDENHEAD, BERKSHIRE, SL6 2QQ**

**BELLAVISTA, 32 HARVEST HILL  
ROAD, MAIDENHEAD,  
BERKSHIRE, SL6 2QQ**

**PRICE: £1.500.000 FREEHOLD**

A well appointed and most spacious five bedroom detached family home of just under 3,000sq/ft, approached through a gated entrance over an extensive driveway. The property is set in lovely, well established, south west facing gardens of good size featuring a summerhouse/home office and benefiting from a high degree of privacy. The property is located in a popular residential area within easy reach of Maidenhead town centre and railway station (London Paddington Elizabeth Line) and the M4/M40 network.

•RECEPTION HALL • CLOAKROOM • FOUR SPACIOUS RECEPTION ROOMS • LARGE MODERN GERMAN KITCHEN/ BREAKFAST ROOM • UTILITY ROOM •LARGE GALLERIED LANDING (CONCRETE FIRST FLOORS) • MAIN BEDROOM WITH WARDROBES AND EN- SUITE BATHROOM • GUEST BEDROOM WITH WARDROBES AND EN- SUITE BATHROOM • THREE FURTHER BEDROOMS • FAMILY BATHROOM •LARGE PART BOARDED ROOF SPACE (POTENTIAL FOR CONVERSION TO PROVIDE ADDITIONAL ACCOMODATION STTP) • GATED DRIVEWAY WITH GOOD PARKING • DETACHED DOUBLE GARAGE WITH LOFT STORAGE • LOVELY SECLUDED SOUTH WEST FACING GARDENS WITH SUMMERHOUSE/ HOME OFFICE •EPC RATING D • COUNCIL TAX BAND G

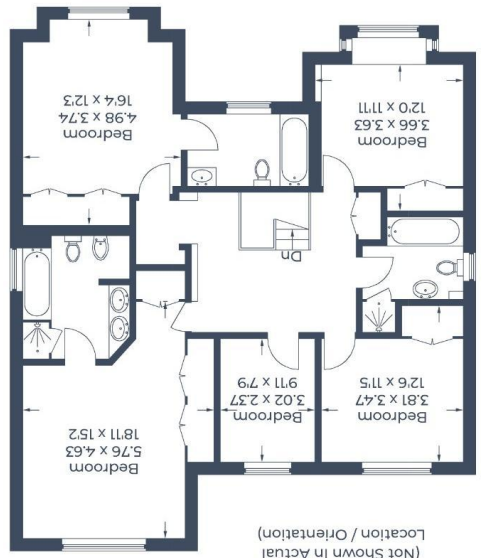




For clarification we wish to inform prospective purchasers that we have prepared these sales particulars as a general guide. We have not carried out a detailed survey nor tested the services, appliances and specific fittings. Room sizes should not be relied upon for carpets, furnishings and appliances. Whilst these particulars are believed to be correct their accuracy is not guaranteed and are given without responsibility. They do not form part of any contract.

Illustration for identification purposes only, measurements are approximate, not to scale. © C3 Property Marketing Produced for Braxton

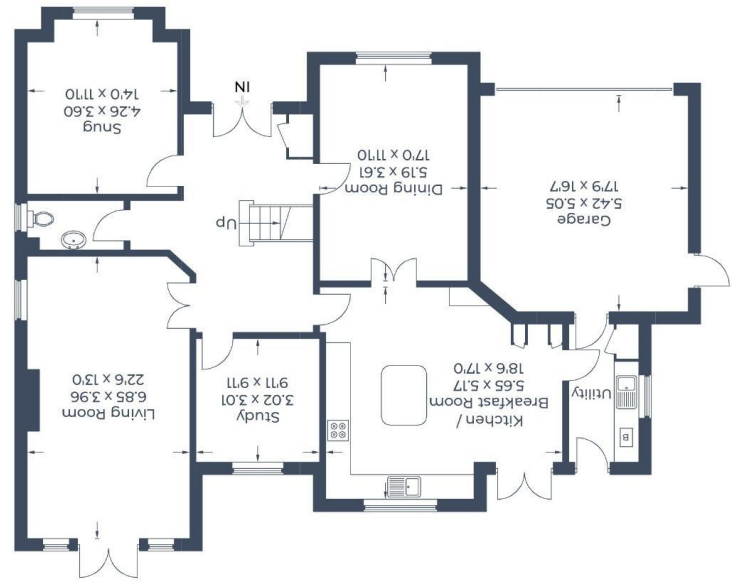
**First Floor**



(Not Shown In Actual Location / Orientation)



**Ground Floor**



Approximate Cross Internal Area  
Ground Floor = 157.1 sq m / 1,691 sq ft  
First Floor = 109.7 sq m / 1,181 sq ft  
Summer House = 11.3 sq m / 122 sq ft  
Total = 278.1 sq m / 2,994 sq ft (including Garage)