

39 High Street, Maidenhead, Berkshire SL6 1JF

Tel: 01628 674234 Fax: 01628 785432

Email: property@braxtons.co.uk

braxtons.co.uk



Residential Sales | Land & New Homes | Properties to Let | Landlords, Lettings and Management Services



GUIDE PRICE £695,000 FREEHOLD

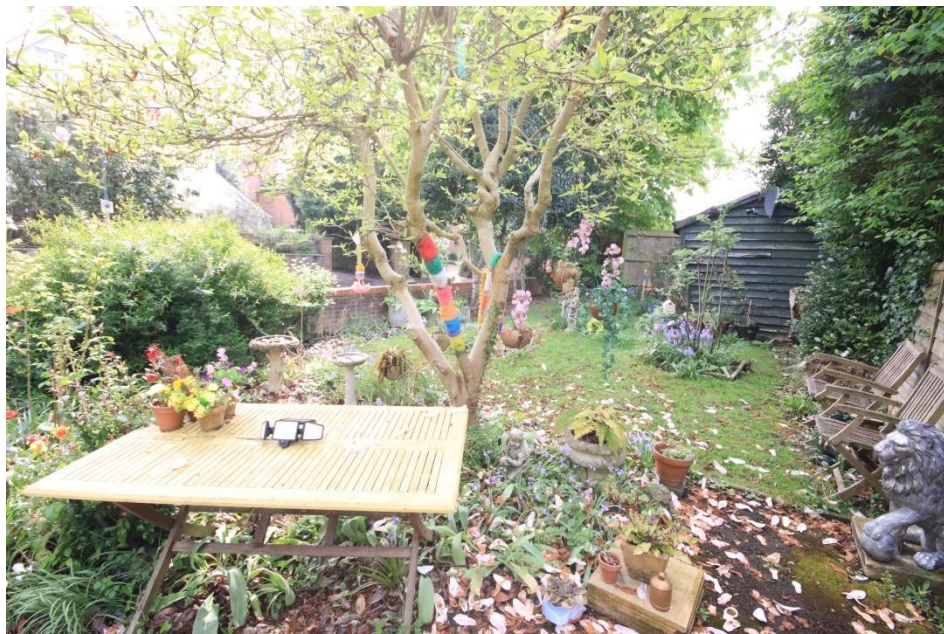
LITTLE RAINTREE, RAY PARK ROAD, MAIDENHEAD, BERKSHIRE, SL6 8QT

In need of modernisation/refurbishment, an opportunity to acquire this two-bedroom detached bungalow situated close to the River Thames and offering excellent potential for someone to create their ideal home. The property features a generous living/dining room, kitchen, two double bedrooms and a bathroom as well as a delightful enclosed rear garden, driveway parking and an attractive front and side garden with a store shed. The property is offered for sale with NO CHAIN and is conveniently located for walks along the river with its array of bars and restaurants and the nearby 19 Acre country park at Taplow Riverside.

• ENTRANCE HALL • LIVING/DINING ROOM • KITCHEN • TWO DOUBLE BEDROOMS • BATHROOM •
DRIVEWAY PARKING • FRONT, REAR & SIDE GARDENS • IN NEED OF MODERNISATION • NO CHAIN • SOUGHT-
AFTER RIVER AREA • EPC RATING D • COUNCIL TAX BAND E



ACCOMMODATION



Approximate Gross Internal Area = 72.2 sq m / 777 sq ft
Garage = 13.2 sq m / 142 sq ft
Total = 85.4 sq m / 919 sq ft

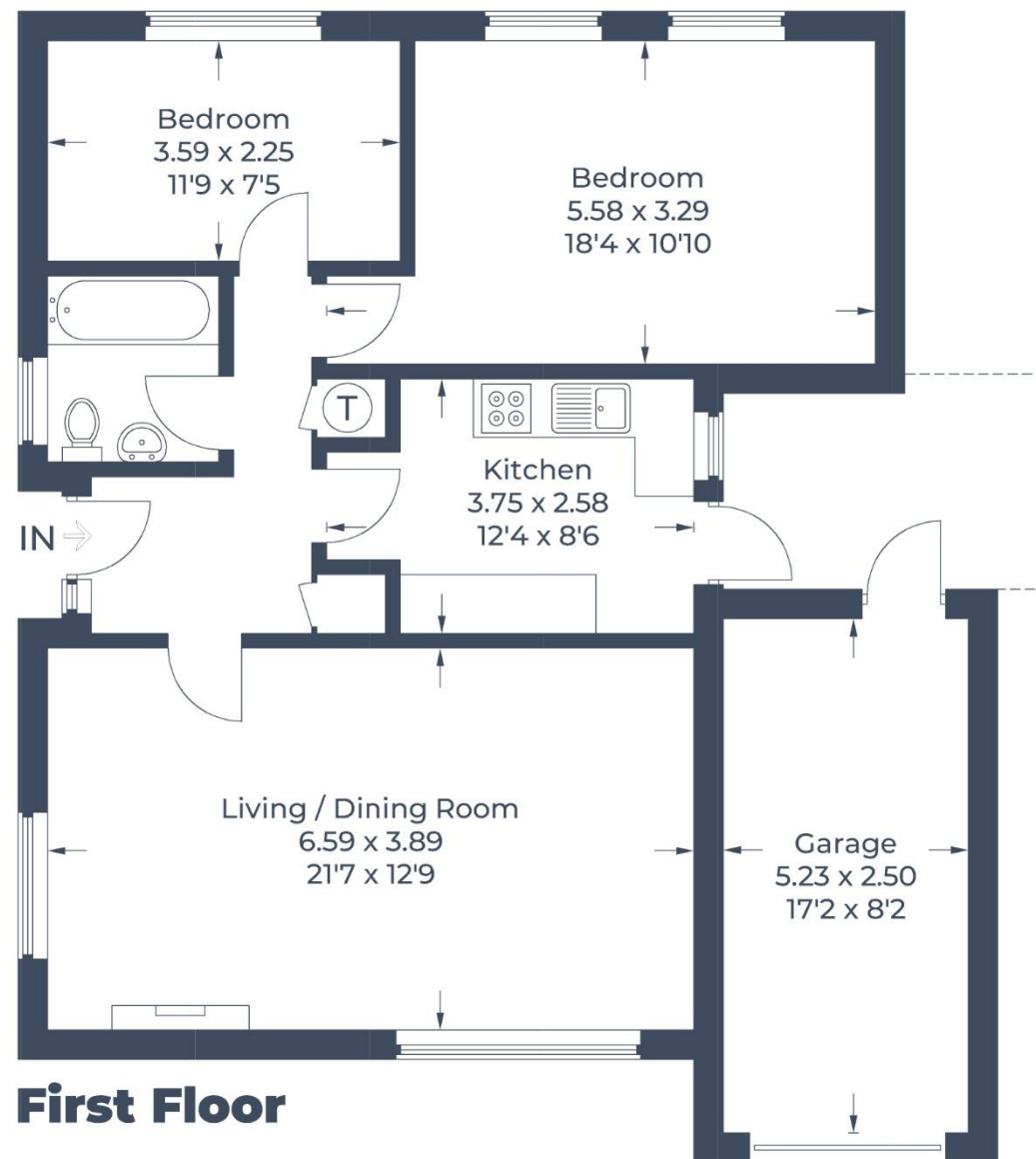


Illustration for identification purposes only,
measurements are approximate, not to scale.
© CJ Property Marketing

For clarification we wish to inform prospective purchasers that we have prepared these sales particulars as a general guide. We have not carried out a detailed survey nor tested the services, appliances and specific fittings. Room sizes should not be relied upon for carpets, furnishings and appliances. Whilst these particulars are believed to be correct their accuracy is not guaranteed and are given without responsibility. They do not form part of any contract.



[braxtons.co.uk](https://www.braxtons.co.uk)