



16 WOODHURST ROAD, MAIDENHEAD, BERKSHIRE, SL6 8TF

16 WOODHURST ROAD MAIDENHEAD, BERKS SL6 8TF

GUIDE PRICE £1,850,000 FREEHOLD

Situated in the sought after "River Area" of Maidenhead close to Boulters Lock and the 19 acre Country Park at Taplow Riverside. An opportunity to acquire this individually designed five bedroom detached family house which has been built in recent years by the present owners to a high level of finish and specification, standing in a secluded plot of just over 0.25 of an acre. The property features a large open plan kitchen/dining/family room with direct access onto a large decked terrace, a generous triple aspect living room which provides ample entertaining space and study/home office. The first floor provides a main bedroom with walk-in wardrobe, en-suite shower room and access onto a balcony overlooking the rear garden, a guest suite with en-suite shower room, three further bedrooms, a utility room, underfloor heating to the ground floor (radiators to the first) and the remainder of the new-build warranty.

*SPACIOUS RECEPTION HALL & CLOAKROOM *TRIPLE ASPECT LIVING ROOM *KITCHEN/DINING/FAMILY ROOM & UTILITY ROOM *STUDY/HOME OFFICE *MAIN BEDROOM WITH WALK-IN WARDROBE, EN-SUITE SHOWER ROOM & ACCESS TO A BALCONY *GUEST BEDROOM WITH EN-SUITE SHOWER ROOM *THREE FURTHER BEDROOMS *CAT 6 WIRING FOR INTERNET *FAMILY BATHROOM *DELIGHTFUL SECLUDED WEST FACING REAR GARDEN *DETACHED GARAGE WITH 7.5KW EV CHARGER, LARGE ROOM ABOVE WITH SERVICES CONNECTED – COULD BE USED AS OFFICE/GYM/TEENAGE RETREAT *EXTENSIVE DRIVEWAY PARKING *NO CHAIN *MVHR AIRFLOW SYSTEM *EPC RATING B *COUNCIL TAX BAND G







Approximate Gross Internal Area
Ground Floor = 115.7 sq m / 1,245 sq ft
First Floor = 122.3 sq m / 1,316 sq ft
Garage Ground Floor = 37.0 sq m / 398 sq ft
Garage First Floor = 37.0 sq m / 398 sq ft
Total = 312 sq m / 3,357 sq ft

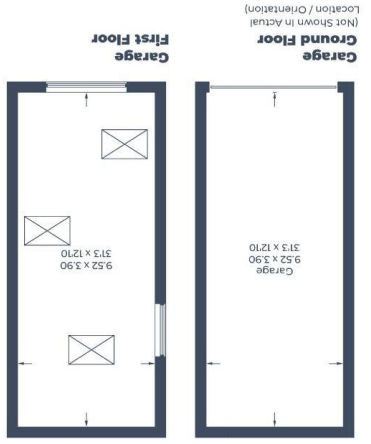
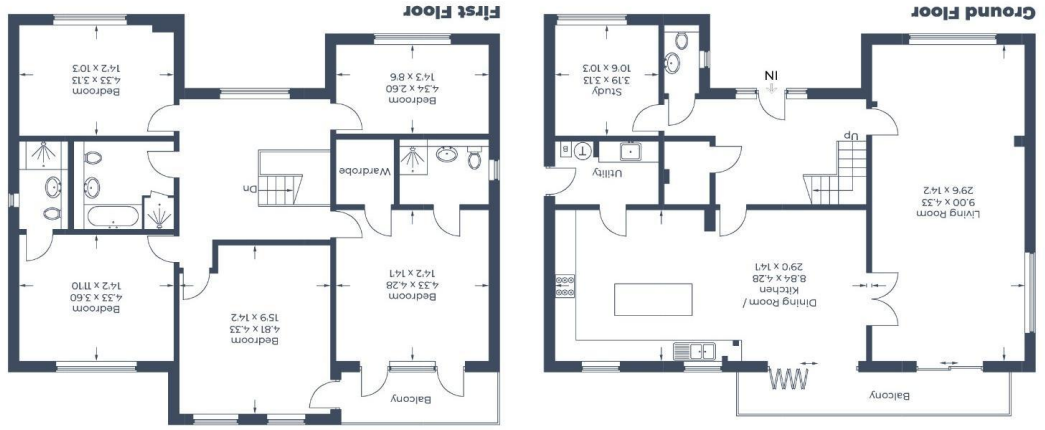


Illustration for identification purposes only,
measurements are approximate, not to scale.
© CJ Property Marketing Produced for Braxton



For clarification we wish to inform prospective purchasers that we have prepared these sales particulars as a general guide. We have not carried out a detailed survey nor tested the services, appliances and specific fittings. Room sizes should not be relied upon for carpets, furnishings and appliances. Whilst these particulars are believed to be correct their accuracy is not guaranteed and are given without responsibility. They do not form part of any contract.



39 High Street, Maidenhead, Berkshire SL6 1JF
Tel: 01628 674234 Fax: 01628 785432
Email: property@braxtons.co.uk
braxtons.co.uk

Residential Sales | Land & New Homes | Properties to Let | Landlords, Lettings and Management Services

