



The White House,

Sunninghill Road, Ascot, Surrey, GU20 6PP.



The White House,

Sunninghill Road, Ascot Surrey. GU20 6PP.

Set in the heart of its most impressive 6 acres of grounds, this luxury Provençal style home offers modern living with an abundance of space and plentiful amenities.

- ◇ A luxury characterful seven bedroom home with accommodation exceeding 9000sqft
- ◇ 6 acres of grounds with unrivalled privacy and countryside views
- ◇ Provençal style residence with high ceilings, stone fireplace and Mark Wilkinson kitchen and laundry room
- ◇ Electric gates lead to the long driveway giving impressive views of the property as you drive up
- ◇ Principle rooms with elevated views of the manicured grounds
- ◇ Lower Ground floor accommodation includes media room, games room, two guest / staff rooms and laundry
- ◇ Master bedroom suite with dressing room, ensuite bathroom and private balcony
- ◇ Outdoor heated swimming pool with pool house and sun terraces
- ◇ Triple garage with large one bedroom annex accommodation above
- ◇ Ideally located close to Sunningdale and Ascot for access to numerous amenities and transport

Situation

Located in this highly desirable area, close to South Ascot and Sunningdale. Known for its world-famous racecourse, Ascot has a bustling High Street and offers a range of shops catering for day-to-day needs, along with a good choice of restaurants, pub and bars. The nearby towns of Windsor, Camberley and Guildford provide more extensive amenities.

For commuters, the area is well served with easy connections to the motorway network (M3, M4 and M25), in turn providing access to Heathrow and Gatwick airports. Ascot and Sunningdale rail stations area also within easy reach.

Leisure facilities are plentiful and of excellent quality with Windsor Great Park nearby, and the renowned Wentworth, Sunningdale and The Berkshire golf clubs close at hand. For the equestrian enthusiast, horse racing is available at Ascot and Windsor, and riding in Windsor Great Park and on Chobham Common.

The excellent schools in the area include Wellington College, Eton College, Lambrook, Papplewick, Heathfield School, Licensed Victualler's School, St. George's, and St. Mary's Ascot, to name a few. For international schooling, TASIS (The American School) and ACS (American Community School) are both within easy reach.

Fixtures and Fittings

Carpets, curtains and light fittings available by separate negotiation.

Services

The property has mains gas, electricity, water and mains drainage.

Local Authority

Surrey Heath

Energy Rating

C79



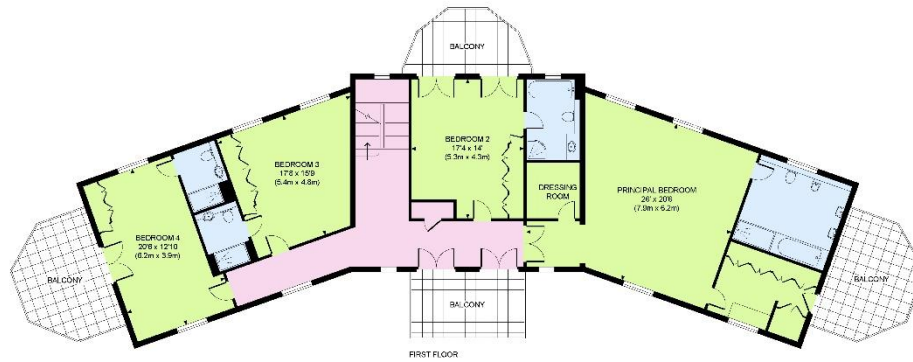




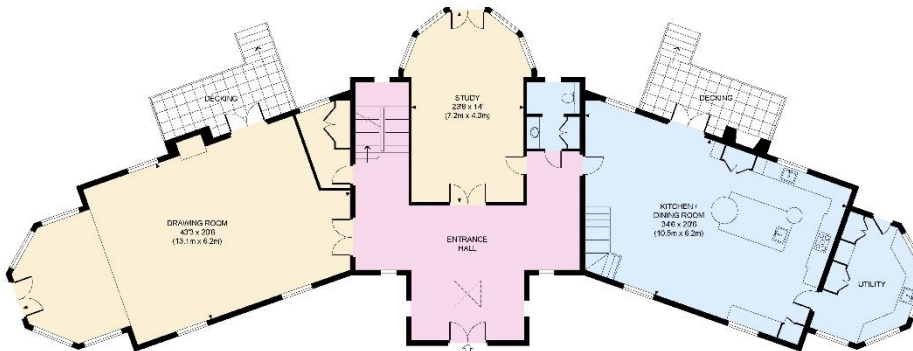
SECOND FLOOR



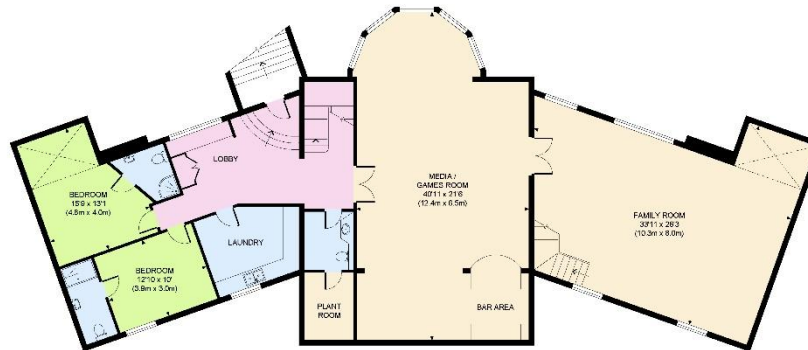
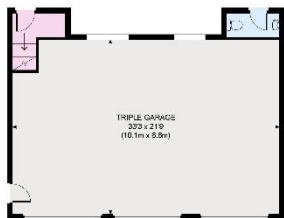
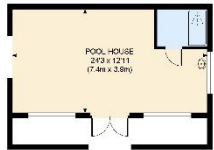
Approximate Gross Internal Area
7321 sq ft / 680.1 sq m
Approximate Gross Internal Area Outbuildings
1730 sq ft / 163.7 sq m



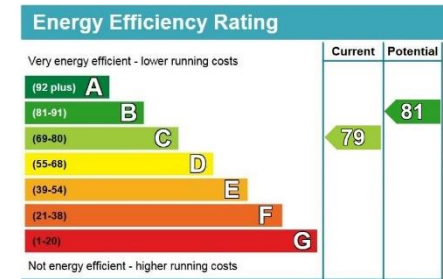
FIRST FLOOR



GROUND FLOOR



LOWER GROUND FLOOR



The Estate Office, 2 Station Approach,
Virginia Water, Surrey, GU25 4DL
Tel: 01344 843000
Email: homes@bartonwyatt.co.uk
www.bartonwyatt.co.uk



Important Information: These particulars are for guidance only. They are prepared and issued in good faith and are intended to give a fair summary of the property. Any description or information should not be relied on as a statement or representation of fact of that the property or its services are in good condition. The photographs show only certain parts of the property at the time they were taken. Any areas, measurements or distances given are approximate only. Any reference to alterations to or us of, any part of the property is not a statement that any necessary planning, building regulations or other consent has been obtained. These matters must be verified by an intending purchaser. All statement contained in these particulars in relation to the property are made without responsibility of Barton Wyatt or its clients. Neither Barton Wyatt (nor any joint agents) nor any of their employees has any authority to make or give any representation or warranty whatsoever to the property.