



# Still Meadow,

Ridgemean Road, Englefield Green, Surrey, TW20 0YD

BARTON · WYATT

# Still Meadow,

Ridgemean Road, Englefield Green, Surrey, TW20 0YD.

*A truly unique opportunity to purchase a family home with land, paddocks, and an indoor equestrian arena, totaling 4.3 acres on one of the area's finest roads.*

- ◇ Five-bedroom family home
- ◇ Paddock and grounds of 4.3 acres
- ◇ Indoor equestrian arena of 8200sqft
- ◇ Close to Windsor Great Park
- ◇ Premier road
- ◇ Decking platform with views towards Windsor Castle
- ◇ Elegant home with good rooms sizes
- ◇ Driveway with roundabout
- ◇ Double garage
- ◇ Various outbuildings and carport

## Situation

**Schools** - Excellent local schools include Bishopsgate School, St John's Beaumont, Eton College, St George's School in Windsor, St Mary's Ascot, Lambrook, Papplewick, Heathfield, The ACS and TASIS International Schools, Harrow School, Wellington College and Wycombe Abbey for Girls.

**Fine Dining** - Coworth Park, The Wentworth Club, The Waterside Inn and Fat Duck in Bray, The Latymer Restaurant at Pennyhill Park.

**Racing** - At Ascot, Windsor, Epsom, Kempton and Sandown Park.

**Polo** - At Guards Polo Club in Windsor Great Park, The Royal County of Berkshire Polo Club in Winkfield and Cowdray Park further afield.

**Golf** - At Wentworth, Sunningdale, Swinley Forest, Queenwood and Foxhills.

**Travel** - Heathrow and Farnborough Airports both lie within easy reach. Egham train station provides a regular service to London Waterloo from about 37 minutes. The M25 is close by giving easy access to London and the national motorway network.

**Walking** - Walking, riding and other country pursuits are on the doorstep in Windsor Great Park.

## Fixtures and Fittings

Carpets, curtains and light fittings available by separate negotiation.

## Local Authority

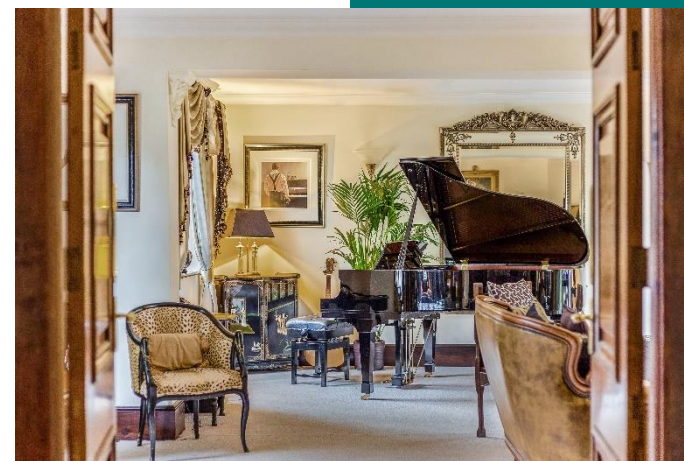
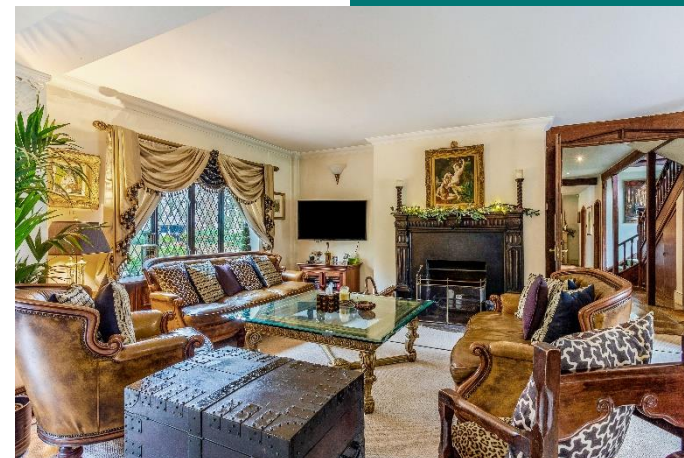
Runnymede Borough Council – 01932 828383

## Services

The property has mains gas, electricity, water, and mains drainage.

## Energy Rating

D65





Approximate Area = 351 sq m / 3778 sq ft  
(Excluding Void)



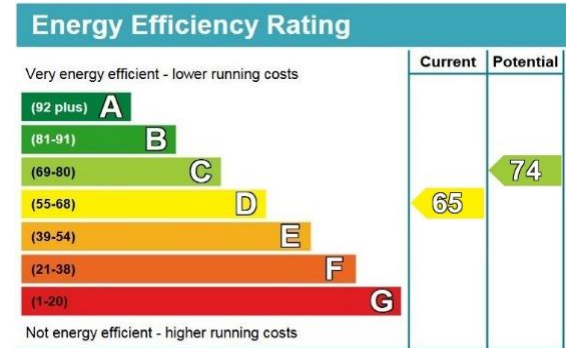
Approximate Area = 765.8 sq m / 8243 sq ft



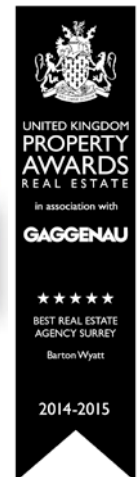
Approximate Area = 235.3 sq m / 2533 sq ft  
(Excluding Tiki Hut / Carport)



Surveyed and drawn in accordance with the International Property Measurement Standards (IPMS 2: Residential)  
fourwalls-group.com 327804



The Estate Office, 2 Station Approach,  
Virginia Water, Surrey, GU25 4DL  
Tel: 01344 843000  
Email: homes@bartonwyatt.co.uk  
www.bartonwyatt.co.uk



Important Information: These particulars are for guidance only. They are prepared and issued in good faith and are intended to give a fair summary of the property. Any description or information should not be relied on as a statement or representation of fact of that the property or its services are in good condition. The photographs show only certain parts of the property at the time they were taken. Any areas, measurements or distances given are approximate only. Any reference to alterations to or us of, any part of the property is not a statement that any necessary planning, building regulations or other consent has been obtained. These matters must be verified by an intending purchaser. All statement contained in these particulars in relation to the property are made without responsibility of Barton Wyatt or its clients. Neither Barton Wyatt (nor any joint agents) nor any of their employees has any authority to make or give any representation or warranty whatsoever to the property.