

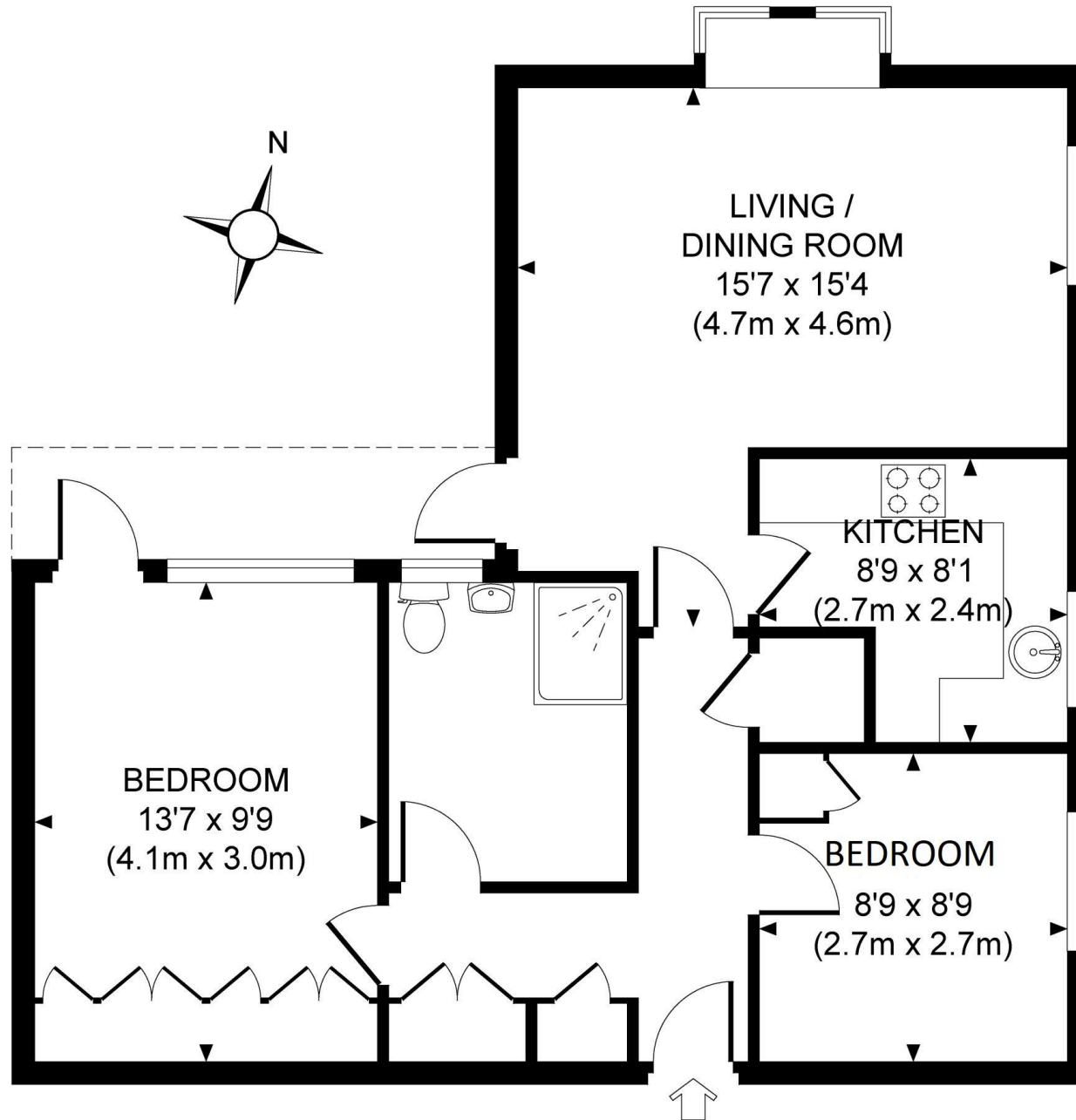


ST JOHNS

£180,000

Situated within a quiet development on the fringes of Hook Heath is this ground floor two bedroom apartment, exclusively available for the over 55's.

Approximate Gross Internal Area
612 sq ft / 56.8 sq m



Woodlands Court, The Mount, St Johns, Woking, Surrey, GU21 7FA

- **Two Bedrooms**
- **Exclusively For Over 55's**
- **Modern Kitchen**
- **Wet Room**
- **Spacious Lounge**
- **Peaceful Location**
- **Beautiful Grounds**
- **NO ONWARD CHAIN**

Situated within a quiet development on the fringes of Hook Heath is this ground floor two bedroom apartment, exclusively available for the over 55's.

The property comprises of a spacious lounge with private balcony, modern fitted kitchen with ample storage options and worktop surfaces, two bedrooms with the principal bedroom offering built in storage and a wet room completes the accommodation.

Benefits include electric heating and plenty of parking. Further benefits include beautiful communal gardens, pretty views and an on-call estate manager.

St. John's is a small village, with a village green and local shops, located within close proximity to Woking Town Centre with the Basingstoke canal running through the centre of the village. For those times when you are in need of something more comprehensive however, Woking town centre which has been the subject of massive investment in recent years, is just a short drive away and now has something of a bustling and cosmopolitan feel to it with a wide and eclectic array of bars, cafes, restaurants and shops. In the Peacocks centre you will also find the New Victoria theatre and the multi screen cinema along with further shopping opportunities. Woking has what is widely regarded to be one of the best commuting rail stations in the south east and runs an extremely fast and frequent service into Waterloo. Brookwood main line station also lies within easy reach providing rail services to London Waterloo in about 30 minutes.

We confirm that these particulars of sale have been prepared as a general guide only and we have not carried out a detailed survey or tested the specified services, equipment and appliances. Room sizes should not be relied upon when ordering carpets, curtains or other furnishings. Photographs are reproduced for general information and it must not be inferred that any item shown is included for sale with the property.



