



Hindhead Galleries

At a glance:

- **Versatile commercial space**
- **Parking**
- **Access to the A3**

Situated in the village of Hindhead, this commercial space provides a great opportunity in a popular location.

With the potential for someone to put their own stamp on, this shop is within a short distance of the A3 and providing ample footfall to run a business.

The premises are available to view strictly by appointment through Kelway Law Estate Agents.



Hindhead Galleries

Hindhead & Surroundings:

The property is set close to local conveniences such as the post office/store/petrol station, a dentist and a coffee shop. Further conveniences include playing fields, Hindhead Golf Club, local shops and restaurants, pharmacy, churches and a primary school.

The larger towns of Farnham and Haslemere are within a short driving distance, both with high street shopping and main-line rail connections to London in under an hour. Access to the A3 is just a few minutes away, with dual carriageways leading to London and Portsmouth. The surrounding area hosts a large choice of primary and secondary schools plus beauty spots including The Devil's Punchbowl and The Golden Valley.

Agents Note:

Whilst we endeavour to make our details accurate and reliable, if there is any point which is of particular importance to you please contact this office and we will be pleased to check the relevant information. Do so particularly if contemplating travelling some distance to view a property. The appliances mentioned have not been professionally tested



Hindhead Galleries

Viewings Arrangements:

Viewings are strictly by appointment with Kelway Law Estate Agents and can be booked by calling the local office or via our website www.kelwaylaw.co.uk

We are open:

Monday – Friday: 09:00 – 18:00
Saturday: 09:00 – 17:00

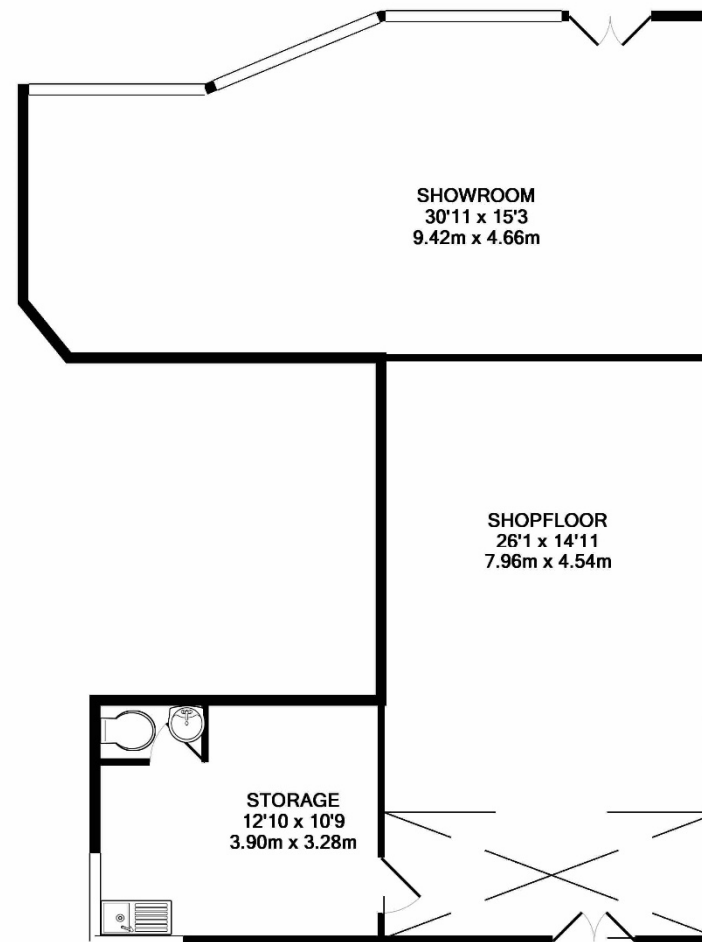
Are you selling locally?

Your property is our passion and we would be delighted to assist with your move. To book your free no obligation valuation call your local office or visit www.kelwaylaw.co.uk

Haslemere: 01428 661525
Hindhead: 01428 604488
Liphook: 01428 722447

Investment Purchase?

Buying a property to let then you'll need to know the in's and out's from rental value through to your legal obligations as a Landlord. Being members of Association of Regulated Letting Agents (ARLA) means that you can be sure of a professional knowledgeable person looking after your property.



TOTAL APPROX. FLOOR AREA 957 SQ.FT. (88.9 SQ.M.)

Whilst every attempt has been made to ensure the accuracy of the floor plan contained here, measurements of doors, windows, rooms and any other items are approximate and no responsibility is taken for any error, omission, or mis-statement. This plan is for illustrative purposes only and should be used as such by any prospective purchaser. The services, systems and appliances shown have not been tested and no guarantee as to their operability or efficiency can be given
Made with Metropix ©2018