



 kelway  
law

Lion lane, Haslemere, Surrey

£1295 PCM





## Lion Lane

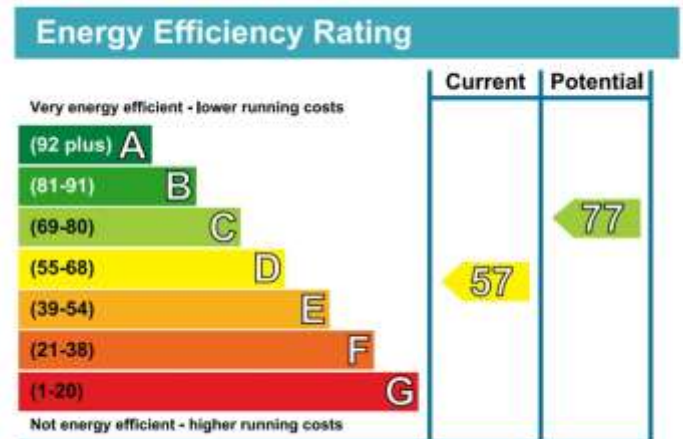
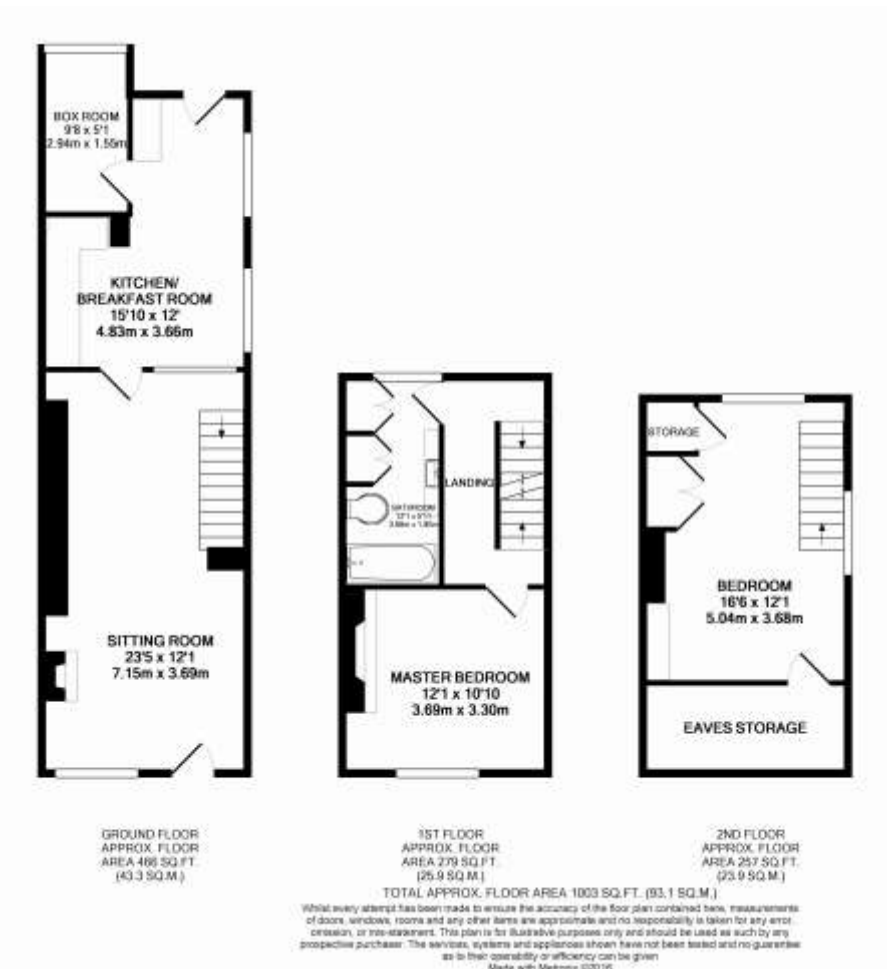
At a glance:

- End of terrace Cottage
- Two Bedrooms
- Bathroom
- Sitting/dining room
- Extended kitchen/breakfast room
- Box room/storage
- Driveway parking
- Rear garden

An attractive cottage with good sized accommodation in a convenient position.

The accommodation is over three floors and comprises of two bedrooms, bathroom, sitting room, delightful bright and airy extended kitchen/breakfast room and a box/storage room.

This end of terrace cottage offers driveway parking for one vehicle and access at the side to the rear garden mainly laid to lawn and enclosed by panel fencing.



### Haslemere & Surroundings:

Haslemere is a thriving market town and offers a wide and varied range of shopping facilities with many multiple and individual stores.

There is a vast array of restaurants catering for most tastes, a range of coffee houses and the town is ideally located for the commuter with fast links to the airports and a station on the Portsmouth Waterloo line giving access to London in approximately 55 minutes.

Haslemere is particularly well served with schools that are within walking distance and recreational facilities include The Herons Leisure Centre with its squash courts, gym and swimming pools and the South Coast is approximately 25 miles distant

### Agents Note:

Whilst we endeavour to make our details accurate and reliable, if there is any point which is of particular importance to you please contact this office and we will be pleased to check the relevant information. Do so particularly if contemplating travelling some distance to view a property. The appliances mentioned have not been professionally tested





### **Viewings Arrangements:**

Viewings are strictly by appointment with Kelway Law Estate Agents and can be booked by calling the local office or via our website [www.kelwaylaw.co.uk](http://www.kelwaylaw.co.uk)

### **Referral fees:**

Where we refer sellers and/or potential buyers to use the services of ancillary providers we receive a referral fee should you decide to use their services.

**Conveyancing:** We refer conveyancers from a panel selection and are paid a fee £200.00 for each transaction undertaken.

**Mortgages:** We refer to Gilmar Independent Financial Solutions and in doing so receive a payment the equivalent of 25% of the fee the broker receives in arranging the mortgage for you.

### **Are you selling locally?**

Your property is our passion and we would be delighted to assist with your move. To book your free no obligation valuation call your local office or visit [www.kelwaylaw.co.uk](http://www.kelwaylaw.co.uk)

### **Investment Purchase?**

Buying a property to let then you'll need to know the in's and out's from rental value through to your legal obligations as a Landlord. Being members of Association of Regulated Letting Agents (ARLA) means that you can be sure of a professional knowledgeable person looking after your property.