



 kelway  
law

Yeomans Lane, Liphook, Hampshire

£1200 PCM

# Yeomans Lane

## At a glance:

- Terrace house
- Three bedrooms
- Modern kitchen
- Spacious sitting/dining room
- Neutrally decorated throughout
- Front and rear gardens
- Garage in block
- Walking distance of schools

Stunningly practical, refurbished and conveniently positioned this appealing three bedroom terrace house is graciously appointed in a popular residential location.

Over two storeys the property has been extensively renovated with new electrics, plumbing, plastered through and neutrally decorated the deceptively spacious accommodation provides three bedrooms, a stunning sitting/dining room over the rear of the property opening to the rear garden whilst the kitchen is brand new and has been fitted with a range of base and eye level units and finished with ceramic floor.

Outside the property has front and rear gardens and a garage in a nearby block.

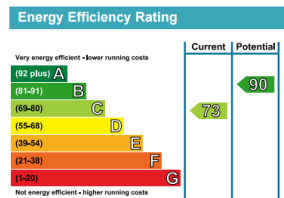


# 29 Yeomans Lane

## Liphook & Surroundings:

Having grown from a coaching stop on the London to Portsmouth journey in the 1800's, Liphook is now a thriving village situated on the three counties borders. The property occupies a convenient position just over half a mile of Liphook village centre which offers local facilities including a Sainsbury's supermarket, two doctors' surgeries, chemist and local stores.

Liphook offers three renowned schools including Bohunt School which was recently voted Times Educational Supplement School of year 2014. The railway station services the Portsmouth/London Waterloo main line, whilst Liphook is located with easy access to the recently improved A3 providing good transport links to the south coast and Guildford and London to the north.



## Agents Note:

Whilst we endeavour to make our details accurate and reliable, if there is any point which is of particular importance to you please contact this office and we will be pleased to check the relevant information. Do so particularly if contemplating travelling some distance to view a property. The appliances mentioned have not been professionally tested



# 29 Yeomans Lane

## Viewings Arrangements:

Viewings are strictly by appointment with Kelway Law Estate Agents and can be booked by calling the local office or via our website [www.kelwaylaw.co.uk](http://www.kelwaylaw.co.uk)

We are open:

Monday – Friday: 09:00 – 18:00  
Saturday: 09:00 – 17:00

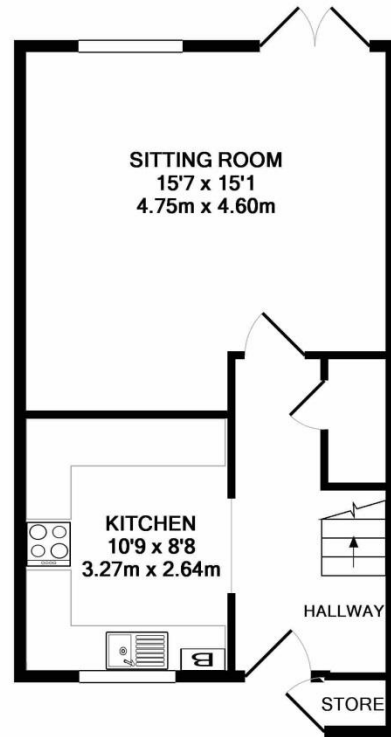
## Are you selling locally?

Your property is our passion and we would be delighted to assist with your move. To book your free no obligation valuation call your local office or visit [www.kelwaylaw.co.uk](http://www.kelwaylaw.co.uk)

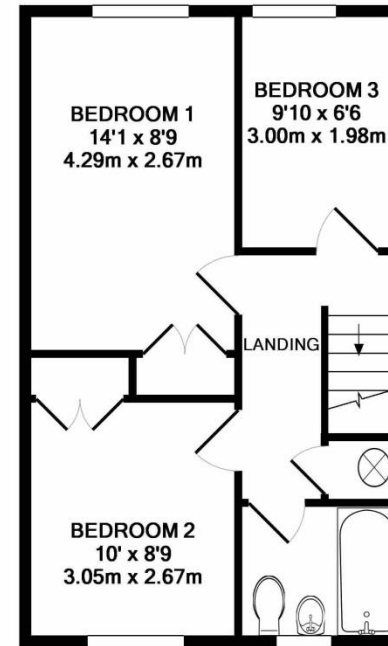
Haslemere: 01428 661525  
Hindhead: 01428 604488  
Liphook: 01428 722447

## Investment Purchase?

Buying a property to let then you'll need to know the in's and out's from rental value through to your legal obligations as a Landlord. Being members of Association of Regulated Letting Agents (ARLA) means that you can be sure of a professional knowledgeable person looking after your property.



GROUND FLOOR  
APPROX. FLOOR  
AREA 399 SQ.FT.  
(37.1 SQ.M.)



1ST FLOOR  
APPROX. FLOOR  
AREA 393 SQ.FT.  
(36.5 SQ.M.)

TOTAL APPROX. FLOOR AREA 792 SQ.FT. (73.6 SQ.M.)

Whilst every attempt has been made to ensure the accuracy of the floor plan contained here, measurements of doors, windows, rooms and any other items are approximate and no responsibility is taken for any error, omission, or mis-statement. This plan is for illustrative purposes only and should be used as such by any prospective purchaser. The services, systems and appliances shown have not been tested and no guarantee as to their operability or efficiency can be given  
Made with Metropix ©2017

