



 kelway
law

White Heart Mews, Liphook, Hampshire

£825 PCM

White Heart Mews

At a glance:

- First floor apartment
- Two bedrooms
- Fitted kitchen
- Sitting room
- Family bathroom
- Walking distance to Railway
- Allocated parking
- Close to local amenities

A splendid first floor apartment, two bedrooms, allocated parking and located close to the centre of Liphook, walking distance to the Railway station.

This first-floor apartment offers spacious accommodation, with two bedrooms, fitted kitchen, separate sitting room and completed with a white suite family bathroom.

Outside the property is an allocated parking space.



White Heart Mews

Liphook & Surroundings:

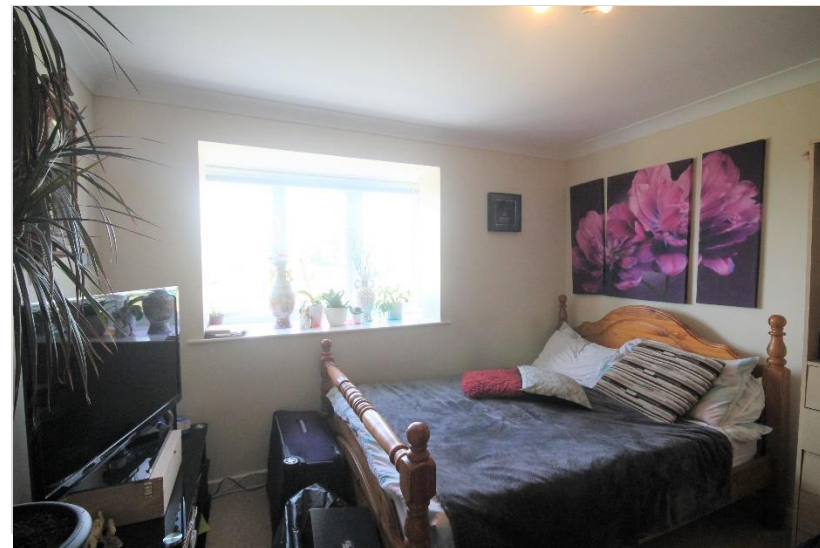
Having grown from a coaching stop on the London to Portsmouth journey in the 1800's, Liphook is now a thriving village situated on the three counties borders. The property occupies a convenient central position in Liphook which offers local facilities including a Sainsbury's supermarket, two doctors' surgeries, chemist and local stores.

The railway station services the Portsmouth/London Waterloo main line, whilst Liphook is located with easy access to the recently improved A3 providing good transport links to the south coast and Guildford and London to the north.

The surrounding countryside is renowned for its outstanding natural beauty, much of which is under the ownership of the National Trust or within the South Downs National Park and is within walking distance of Radford Park as it follows the winding River Wey with a number of trails and large grassed area for recreation.

Agents Note:

Whilst we endeavour to make our details accurate and reliable, if there is any point which is of particular importance to you please contact this office and we will be pleased to check the relevant information. Do so particularly if contemplating travelling some distance to view a property. The appliances mentioned have not been professionally tested



White heart Mews

Viewings Arrangements:

Viewings are strictly by appointment with Kelway Law Estate Agents and can be booked by calling the local office or via our website www.kelwaylaw.co.uk

We are open:

Monday – Friday: 09:00 – 18:00
Saturday: 09:00 – 17:00

Are you selling locally?

Your property is our passion and we would be delighted to assist with your move. To book your free no obligation valuation call your local office or visit www.kelwaylaw.co.uk

Haslemere: 01428 661525
Hindhead: 01428 604488
Liphook: 01428 722447

Investment Purchase?

Buying a property to let then you'll need to know the in's and out's from rental value through to your legal obligations as a Landlord. Being members of Association of Regulated Letting Agents (ARLA) means that you can be sure of a professional knowledgeable person looking after your property.

FLOORPLAN TO FOLLOW